











COMPONENTS

C	CHROME BARREL LOCK & KEY	x2	
D	BRASS LOCK & KEY	x2	
E	NET TIE-permanent for posts	x40	
F	NET TIE- permanent for net support stanchions	x30	
FXB	GOALPOST SLOT NET FIXINGS	x60	
NET	GOAL NET	x1	
GW	GOAL WHEEL HARD RUBBER	x6	
WA	M10 WHEEL AXLES 150mm & LOCKING NUT, WASHERS & PLASTIC COVERS	x3	




POST SECTIONS

Aluminium Sections

G	LEFT SIDE FRAME	x1	
H	RIGHT SIDE FRAME	x1	
I	CROSSBAR SECTION	x1	
J	BACKBAR SECTION-ROLLAWAY with wheels	x1	

OPTIONAL ITEMS

These items are additional and are supplied if purchased with the goal - self weighted goalpost version or unweighted version of this goal

IW	INTEGRAL SELF WEIGHTED COUNTERBALANCE IN BACK FRAME for artificial pitches.	x1	
A	MULTI-SURFACE ANCHOR for grass pitches	x6	
B	GROUND PEG	x12	

GOALS MUST BE ANCHORED AT ALL TIMES

On hard surfaces such as artificial grass counter balance weights supplied should be used and locked in the back bar. On Grass it is possible to unlock and remove the counter balance weights from inside the ground back bar and use additional multi surface anchors with pegs (available separately). This saves the need to carry/wheel heavy weighted goal across a grass pitch.

CARE & MAINTENANCE

see separate sheet supplied or visit www.itsagoal.net for additional copies. Our goalpost if used correctly will last many years. We do also offer a full spare part service and if your goals need refurbishment this can be arranged

NEVER PUSH GOALS SIDWAYS

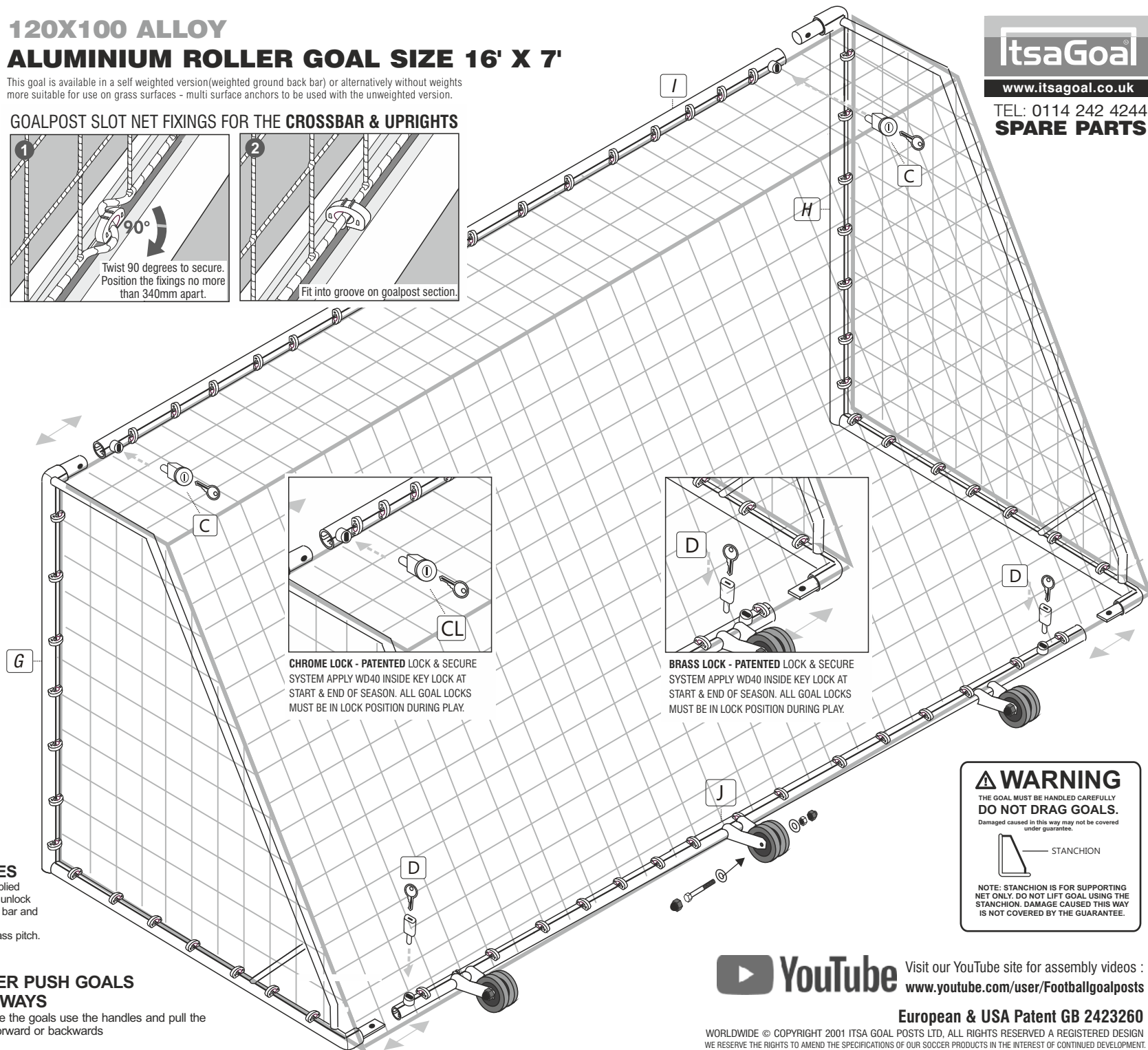
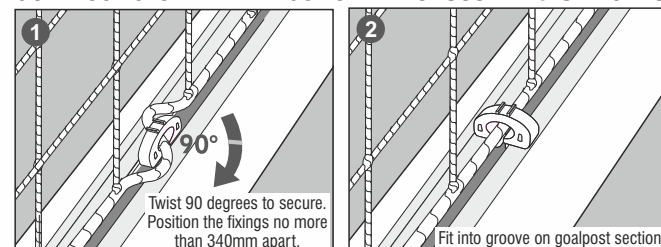
To move the goals use the handles and pull the goals forward or backwards

120X100 ALLOY

ALUMINIUM ROLLER GOAL SIZE 16' X 7'

This goal is available in a self weighted version (weighted ground back bar) or alternatively without weights more suitable for use on grass surfaces - multi surface anchors to be used with the unweighted version.

GOALPOST SLOT NET FIXINGS FOR THE CROSSBAR & UPRIGHTS



ItsaGoal

www.itsagoal.co.uk

TEL: 0114 242 4244

SPARE PARTS

WARNING

THE GOAL MUST BE HANDLED CAREFULLY
DO NOT DRAG GOALS.

Damaged caused in this way may not be covered under guarantee.



NOTE: STANCHION IS FOR SUPPORTING NET ONLY. DO NOT LIFT GOAL USING THE STANCHION. DAMAGE CAUSED THIS WAY IS NOT COVERED BY THE GUARANTEE.



Visit our YouTube site for assembly videos :
www.youtube.com/user/Footballgoalposts

European & USA Patent GB 2423260

WORLDWIDE © COPYRIGHT 2001 ITSA GOAL POSTS LTD. ALL RIGHTS RESERVED A REGISTERED DESIGN
WE RESERVE THE RIGHTS TO AMEND THE SPECIFICATIONS OF OUR SOCCER PRODUCTS IN THE INTEREST OF CONTINUED DEVELOPMENT.
YOUR PRODUCT THEREFORE MAY DIFFER LIGHTLY TO THOSE ILLUSTRATED. E&OE

ADDITIONAL INFORMATION

Lockable aluminium freestanding goal posts that are easy to move around use and store. Crossbar corners are welded both internally and externally to ensure they will stand up to the most rigorous conditions. Oil and clean the lock to ensure the keys are working well at all times. If a key breaks inside the lock a local locksmith will be able to remove it with a special pick. Spare keys are locks are always available. At the end of the season when the goals are not in use check all welds to ensure they have not become damaged. Check periodically through the season that the goals have not been damaged especially if they are left up in areas prone to vandalism. When installing your goals take your time and do a good job to ensure the best results and performance. The installation guides need to be read carefully prior to fixing. Visit itsagoal.net if you need any advice or help or contact the office. To protect the life of your paintwork we suggest that 50mm wide plastic stretch tape be wrapped around the base of the posts about 600mm up from the ground to protect the paintwork from goal keepers kicking the foot of the posts to clean boots. This tape can be purchased from our web site or any local DIY store and should be renewed as and when required. It is much better however if you can ask all visiting and home goal keepers not to kick the posts. A thorough inspection each year and when goals are installed should be carried out and recorded. A goal post maintenance sheet is available to be down loaded from our web site www.itsagoal.net. Problems should be recorded, noted down and acted upon straight away. NEVER USE DAMAGED GOAL POSTS. Goals need to be treated and handled with care and they will then last longer and will perform better. Any paint chips need to be repaired as soon as possible. Rub down with emery paper to form a smooth surface down to bare metal and apply a good quality aluminium primer undercoat and then a top coat to seal the affected area. Any areas left untreated will allow water to penetrate between the powder coat finish and the base metal and if left unchecked the paint work will start to peel away. Any local DIY store will supply what you need. If you treat the goalposts with respect and maintain them properly they will perform year after year.

Multi-surface anchors

Multi-surface anchors are designed to secure the freestanding goalposts to normal grass surface pitches (to 1100 Newtons forward pull test). On a grass surface, use the ground pegs provided in conjunction with the multi-surface anchors. If ground is softer then more ground anchors can be used to spread the load or longer pegs can be inserted. Always angle the pegs as shown on the fitting instructions. To remove stubborn pegs use another peg to lift out do not pull out with the anchor itself or it may damage the securing cross holding the peg in place. This is strong system designed to twist under stress and will not easily be damaged. If you are planning to anchor your goal post on tarmac the fixing positions for the multi-surface anchors need to be secure. We advise :-

1. Dig holes in your tarmac (to sizes specified in fitting instructions).
2. Fill holes with concrete, and drill two 14mm holes 12cm apart and 70mm depth.
3. Position goal and multi-surface anchors and use a suitable 10mm concrete bolt instead of the safety grass pegs. For other surfaces such as wooden sports hall floors wood screws in our multi-surface anchor or counter balance weights can be used. The total weight to conform to the current standards for the goal post topple test can be calculated using the equation stated below.

Goalpost Nets

All our square mesh nets are made to the shape of the net. If you are putting nets up each week we recommend that you locate the top corners first and mark them using tape so that you can easily identify them each time. Place the net over the frame and fit each end onto top stanchion by securing on each corner of the crossbar and uprights using twist and lock net fixings. We recommend only nets with 100mm x 100mm mesh be used with children, to cover head entrapment regulations, Nets with 120mm x 120mm mesh are acceptable for use by adults. Nets can be tied into a bundle and placed into a pillow case (not to damage washing machine) and washed at 40 degrees Celsius with normal washing powder to keep them in tip top condition. Be aware rabbits and rodents have been know to nibble at the base of nets. If nets are left outside we advise lifting off from ground level. If you have this problem sprinkle pepper along the bottom of the net and this should help deter most wild animals.

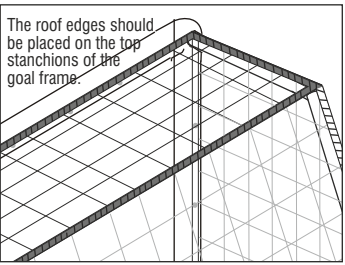
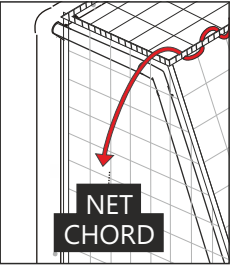
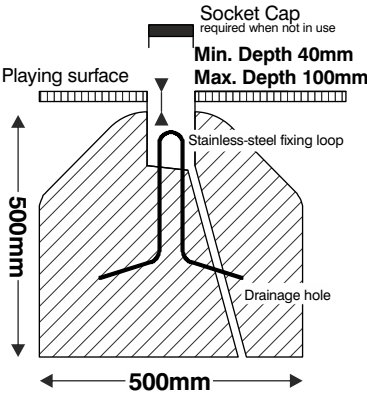
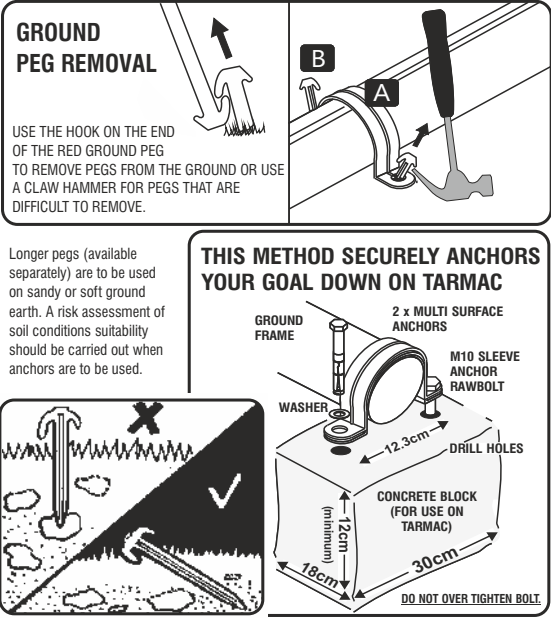
Counter balance weight system - OPTIONAL EXTRA not supplied with goal.

The ITSA GOAL posts counter balance weight system consists of two counter balance weights each weighing 11kg fastened together, 22 kilos of counterweight spread over 500mm. The counter balance weight system is used on flat level playing surfaces or where multi-surface anchors can not be used i.e. sports halls, artificial grass pitches etc. The two connected weights together can be lifted on the frame and used externally. If anchoring your freestanding goalpost is not possible, the guidance and technical notes set out by the Football Association give clear instructions for the use of counter balance weights. If you are unsure what weight you are required to use on your freestanding goal posts, you can work out the weight needed by using the following procedure.

- 1 Measure the height of the crossbar., 2 Measure the length of the goal's side bars. 3 Divide the height by the length. Multiply the result by 112Kg and make a note of the answer. This is the total weight in kilograms that should stabilize the goal to safety standards.
Example: A Regulation Goal, 2.44m high with a 2.025m ground sideframe the calculation would be: 2.44 divided by 2.025 = 1.205 therefore 1.205 x 112Kg = the total weight required for this goal would be 135Kg (less the weight of the back ground bar).

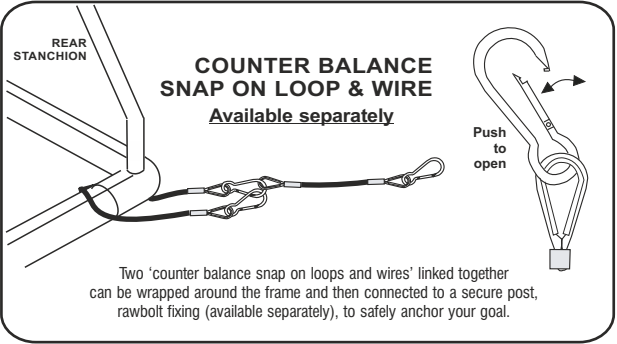
The Football Association Goals for Football Guidance Notes & Technical Details

Freestanding goals will only be safe if you stabilize them properly. Always use the accessories and anchors supplied for the purpose of anchoring a goal. The most reliable methods of stabilizing freestanding goals are: **A. attaching the back bar to permanent fixing points, B. using adequate weights attached to the goals backbar, C. adequate ground anchors.** We strongly recommend you use one of these methods. The diagram on the right shows a typical freestanding goal foundation that will give a permanent pitch fixing. VISIT www.itsagoal.net for up to date goal post safety information



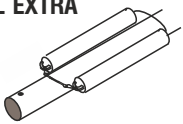
To help define the roof of the net. Tie the cord to one side and pull the net chord and wrap neatly around the stanchion section. If you are regularly attaching or detaching the net then apply colored tape to the roof edges to help identify the roof area.

Net ties provided are optional. They allow the net to be fitted firmly to the net support stanchions. The net includes a head cord which can be tied tightly between the two top net supports to create a professional roof to the net. Attached to the net to the ground back bar using the net ties supplied. We recommend tying the net sufficiently along the back bar so that the net does not interfere with the wheels during transportation.



COUNTER BALANCE WEIGHT - OPTIONAL EXTRA

STEEL COUNTER BALANCE WEIGHTS
For use indoors or on artificial surfaces are available separately.

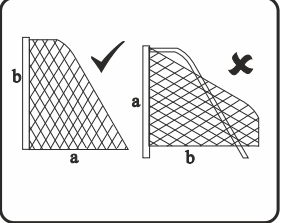


IMPORTANT - Test each goal post before use to satisfy yourself that you have enough counter balance weights attached to the goal to prevent toppling.

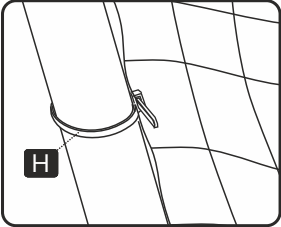
Chain and cable attachments - Whatever method is used to stabilize a goal, any attachment chain or a wire cable between the goal and the weight, anchor, eye bolt or other fixing point should be as short as possible and not allow the back bar to lift more than 50 mm.

Care and Maintenance

1. NEVER use our goalposts without securing locks or correct fittings or in non conforming ground sockets.
2. DAMAGED COMPONENTS requested under guarantee must be returned for inspection. Failure to follow the warnings, assembly and fitting instructions contained in this document may invalidate your guarantee.



◀ **SQUARE MESH** Net is cut to shape. Simply throw over the frame and fit each end onto top stanchion by securing on each corner of crossbar.
NOTE: If your net does not fit the first time, you may be fitting it to the goal frame upside down i.e. that is to say the net from the crossbar to the floor (a) is longer than the length of the net to the bottom of the upright (b).



OPTIONAL - STANCHION NET TIES

TWIST & LOCK Recessed Net Fixings
Fit the recessed goal net fixings into the rear slots on the goal post sections and twist 90 degrees to secure. Position the fixings not more than 340mm apart. The recessed net fixings are designed to fit ITSA goal rear slotted aluminium goal posts. When goal nets are left attached they can also be secured with a 4mm rod that can slide down through the net fixings to prevent unauthorized removal of the net fixings or goal net.



SPARE PARTS
TEL: 0114 242 4244
120x100mm — 24" X 8" — GRASS SURFACE
ROLLER FREESTANDING 1P XBAR — FI 200902016

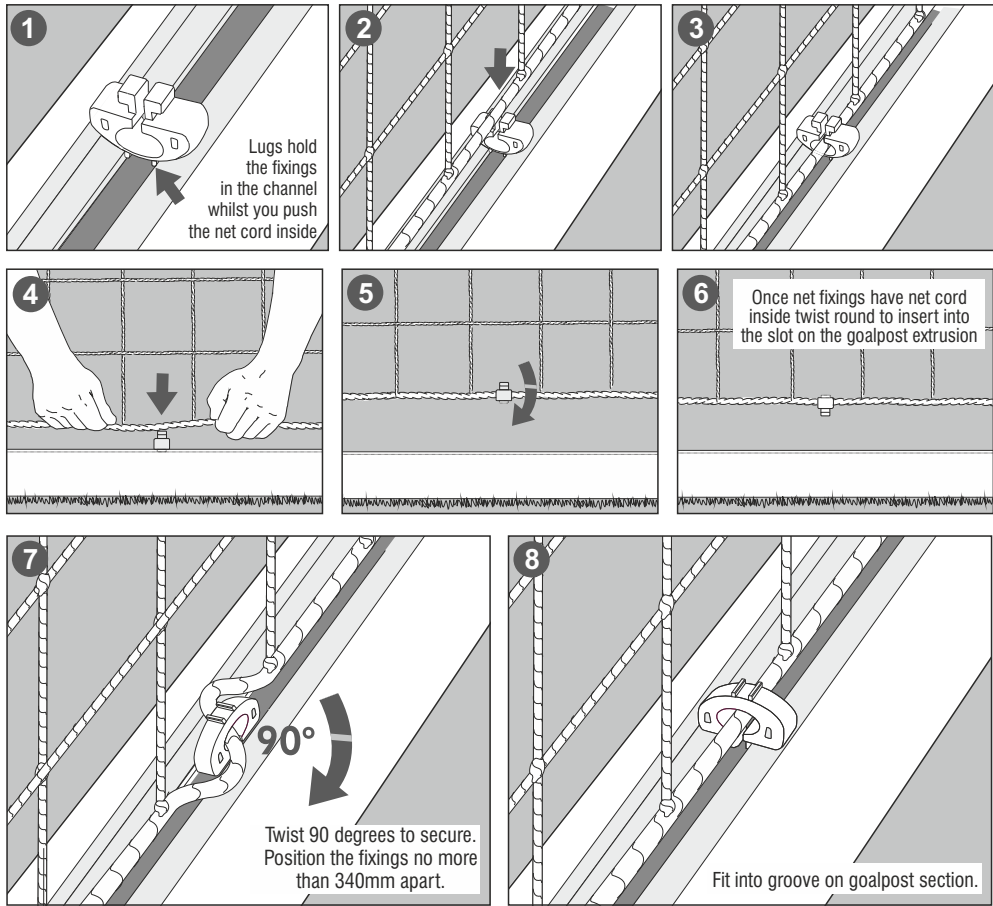
For video demonstrations visit :
www.youtube.com/Footballgoalposts

Goalpost Slot Net Fixing

A net fixing that works on most aluminum goalposts that have a slot on the rear of the posts. This net fixing can be left in place in the slot on the goal

extrusion or can be twisted out and left attached in position on the net.To attached the net turn the net fixing upside down and lay it into the slot with the opening facing up. Do this with goal post extrusion laid on the ground. The two lugs on the top of the fixing will hold the fixing clip firmly in the goalpost slot upside down to enable the net to be pushed through the opening on the back of the fixing. This is a unique design feature that makes it easier to insert the net inside the fixing compared to other similar types of net fittings. Much easier to fit than other similar net fixings.

Fitting Instructions



CARE - MAINTENANCE - INSPECTION

ROUTINE VISUAL CHECKS - Should be made before each use, this enables identification of hazards from vandalism, misuses or general deterioration. examples are, goalpost frame damage, lack of anchors/stability equipment, missing parts, damaged nets, or net fixings, crossbar and goal stability If a visual inspection identifies any defect to the goals they should not be used until the defects are corrected - contact the manufacturer of the goalposts. Check all components supplied are in good condition and a general list of checks are overleaf on table E2 and E3

OPERATIONAL INSPECTION

At least every six months there should be an operational inspection in accordance with national regulations/standards at the time; using the tables and inspections sheets overleaf in accordance with National regulations and the current safety standard set by the British Safety Standards and overseeing governing bodies. Check all components supplied are in good condition. If inspection identifies any defect to the goals they should not be used until the defects are corrected - contact the manufacturer of the goalposts.

MAIN INSPECTION

At least annually there should be a main inspection in accordance with national regulations/standards at that time; using the tables and inspections sheets overleaf in accordance with National regulations and the current safety standard set by the British Safety Standards and overseeing governing bodies. Check all components supplied are in good condition. If inspection identifies any defect to the goals they should not be used until the defects are corrected - contact the manufacture of the goalposts. A report containing the following information according to table E3 over leaf, should be available to the operator.

- a. identifying of issuing body,
- b. place/date of inspection
- c. identification of items being inspected
- d. name/ address/signature of inspector
- e. a record of defects found

All inspections should be reported to the operator. The operator must establish a clear identification system for each goal . Any goals with defects should not be used until corrected.

Table E.2 — Check list for main inspection

Control points (as far as applicable)	Inspection method		Criteria for assessing the results (see Clause 6)	Socketed goal	Portable goal
	Visual	Manual			
Stability	X	X	When the structure is shaken in game play position, there is no tip-over	X	X
Marking	X		Present	X	X
Fixture onto the support (wall/floor)	X	X	No slack in the fixtures other than the slack naturally present due to design or assembly	X	X
Folding and hoisting system		X	No working failure when lifting, dropping or folding away the goal	(X)	(X)
Netting and net fixings	X	X	No defective fixture and/or no mesh holes liable to generate a risk	(X)	(X)
Uprights and crossbar	X	X	No slack other than the functional slack naturally present due to design	X	X

Table E.1 — Goal inspection record Sheet

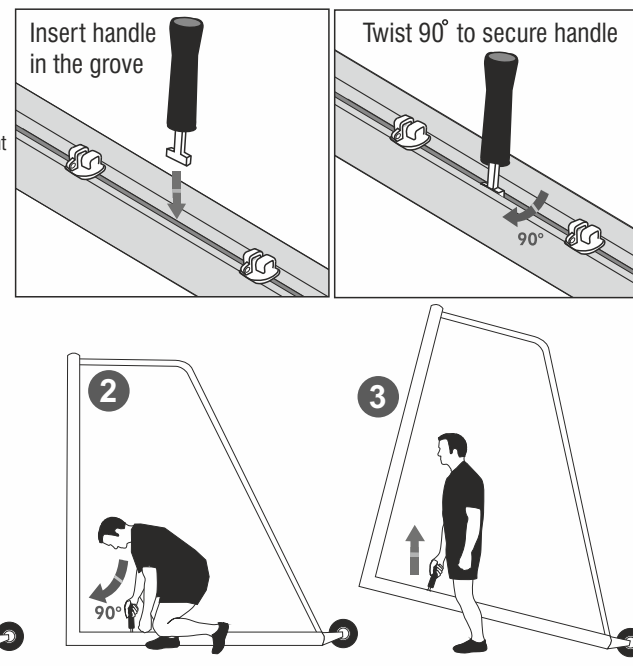
	Goal Identification Number:		Location of Goal:	
Date	Type of Check Indicate Level of Inspection/Maintenance or other	Findings	Action Taken	Inspected by
Goal Size		Goal Type		
Manufacture/Distributor		Date of Manufacture		
Date of Purchase		Supplier Information for Spare Parts		
Date of Inspection/Maintenance/Repair:				
Ground and Prevailing Weather Conditions:				
Result of Inspection (Pass/Fail):				
Further Action to be taken:				
Re-inspected by:				

Table E.3 — Check list for operational inspection

Control points (as far as applicable)	Inspection method		Criteria for assessing the results (see Clause 6)	Socketed goal	Portable goal
	Visual	Manual			
Stability	X	X	When the structure is shaken in game play position, there is no tip-over	X	X
Marking	X	—	Present	X	X
Fixture onto the support (wall/floor)	X	X	No slack in the fixtures other than the slack naturally present due to design or assembly	X	X
Folding and hoisting system	—	X	No working failure when lifting, dropping or folding away the goal	(X)	(X)
Netting and net fixings	X	X	No defective fixture and/or no mesh holes liable to generate a risk	(X)	(X)
Uprights and crossbar	X	X	No slack other than the functional slack naturally present due to design or assembly	X	X
Location changes and transport	X	X	No inadvertent release or unintended collapse in the carrier system	—	X
Lockdown in position	X	X	No inadvertent release of the lockdown system	—	(X)
Anchoring/ ballast system	X	X	Sufficient and securely located	—	(X)
Assembly/ Screw-set	X	X	None of the assembly screws show any signs of loosening	X	X
Corrosion	X	—	No corrosion capable of generating a risk for users	X	X
Support framework (backing frame, foldaway structure)	X	X	No deformation or breakage during working use	X	X
Netting support	X	X	No deformation or breakage	(X)	(X)
Padding	X		No damage and securely located	(X)	(X)
Entrapment ^a	X	X	No risk of entrapment in the goal frame or support framework	X	X
Key X to be inspected; (X) to be inspected if fitted.					
Control points (as far as applicable)	Inspection method		Criteria for assessing the results (see Clause 6)	Socketed goal	Portable goal
	Visual	Manual			
^a If the structure has been changed for initial supply the entrapment should be tested according to 6.3.					

OPTIONAL Moving the goalposts with removable Handles

When re-positioning your goal insert 'Removable Handles' into the channel on the side ground frame, turn 90 degrees to fit handle ② and then lift the goal using the located handle ③. One adult on each upright post is required to raise the upright posts. When both adults have the goal equally raised the goal can be wheeled into position.



IT IS ADVISABLE IN ANY CONTACT SPORT TO TAKE OUT THE RELEVANT INSURANCES TO COVER ALL UNFORESEEABLE CIRCUMSTANCES. IT IS ADVISABLE TO CHECK YOUR GOALS WEEKLY AND UNDERTAKE ANY MAINTENANCE, CHECK PAINTWORK, CHECK NETTING, MAKES SURE ANY LOCKS OR BOLTS ARE IN PLACE, ENSURE THE FRAME IS ASSEMBLED IN ACCORDANCE WITH THE FITTING INSTRUCTIONS BEFORE EACH GAME. ANY NEW PEOPLE USING THE GOALS SHOULD BE PROVIDED WITH THIS LEAFLET AND EXTRA FITTING INSTRUCTIONS ARE AVAILABLE FROM www.itsagoal.co.uk
If the text is too small to read a larger easier to read copy is available upon request.



Visit our YouTube site for assembly videos :
www.youtube.com/user/Footballgoalposts



Visit our YouTube site for assembly videos :
www.youtube.com/user/Footballgoalposts