

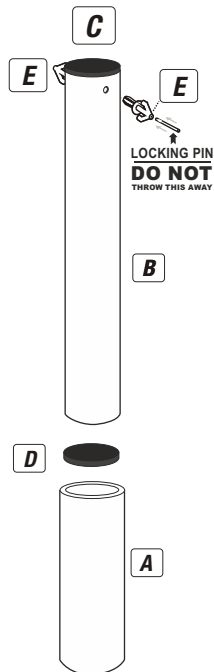
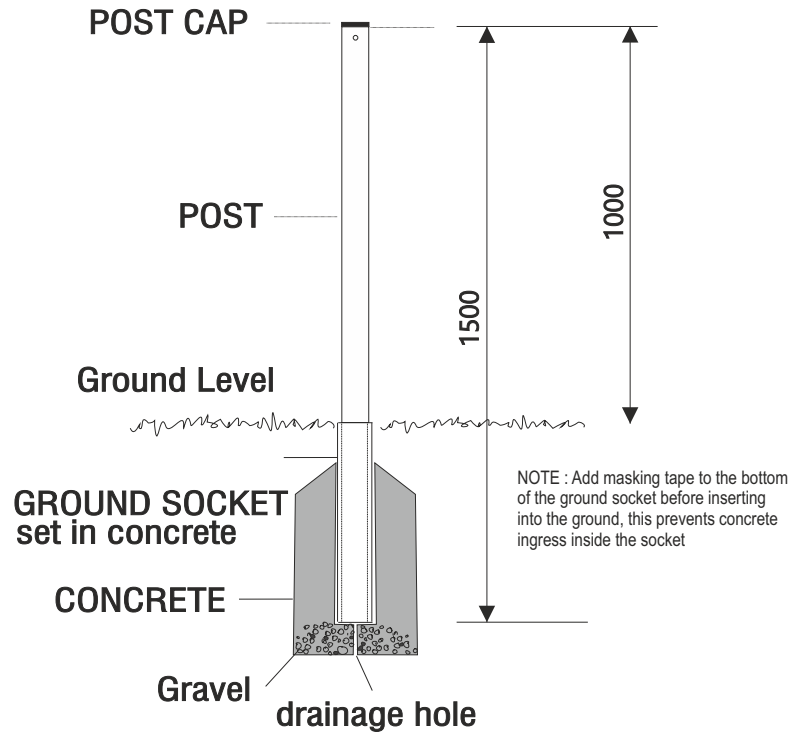
COMPONENTS PER POST

A	GROUND SOCKET - 500mm	x1
B	UPRIGHT POST - 1500mm Drilled for net hooks	x1
C	TOP POST CAP	x1
D	GROUND SOCKET CAP to cover socket hole when removed	x1
E	ARROW HEAD NET FIXING with attached LOCKING PIN	x2

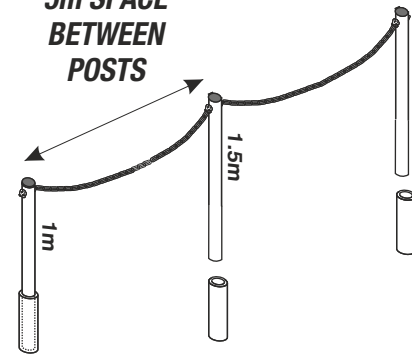
OPTIONAL



FITTING INSTRUCTIONS - RESPECT BARRIER - SOCKETED OPTION FOR CHAIN LINK Post sizes 1.5m (0.5m in ground socket)



5m SPACE BETWEEN POSTS

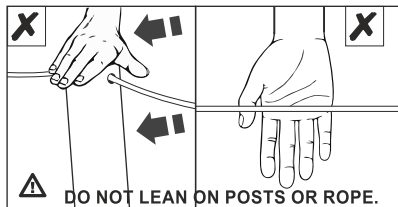


Please note: This is a temporary no load bearing quick-fit barrier to separate spectators from players for a more permanent solution please visit itsagoal.co.uk

⚠ WARNING

ALWAYS CHECK THE POSITION OF ANY UNDERGROUND SERVICES BEFORE EXCAVATION. WE TAKE NO RESPONSIBILITY FOR ANY DAMAGE OR INJURY CAUSED IN THIS MANNER.

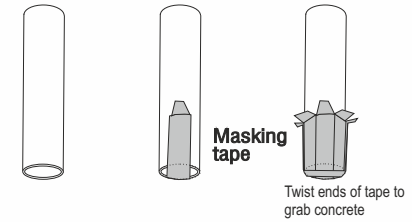
ALWAYS COVER GROUND SOCKET HOLES WITH SOCKET CAPS PROVIDED WHEN THE BARRIER POSTS ARE REMOVED.



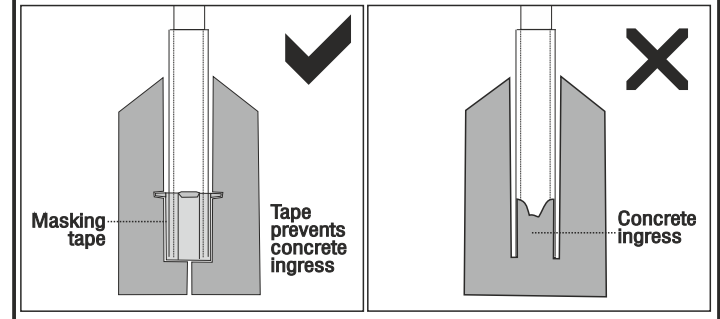
RESPECT BARRIER POSTS WILL NOT BE REPLACED WITHIN THE GUARANTEE PERIOD IF MISUSED. THE RESPECT BARRIER IS ONLY A SEPARATOR BETWEEN SPECTATORS AND PLAYERS.

PVC Ground Socket

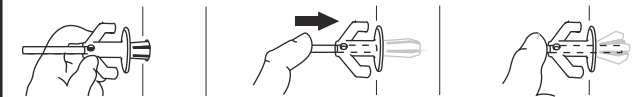
HELPFUL TIP : Add masking tape to the bottom of the ground socket before inserting into the ground, this prevents concrete ingress inside the socket. Twist the top of the tape so it protrudes out slightly, this will help fix into the surrounding concrete and prevent the socket being pulled out with the post through suction.



CONCRETE



DO NOT THROW THE LOCKING PINS AWAY



- 1 Insert Arrow Head into Holes on posts
- 2 Push locking pin Down centre of Arrow Head
- 3 Ensure locking pin is inserted Fully in the posts