

GUIDE TO FITTING FOOTBALL GOAL NETS



FOR THE BEST PRICES ON QUALITY GOAL NETS
CALL : 0745 538 3302 or 0780 334 1483 sales@itsagoal.net
Official online supplier - www.soccertackle.com

 **YouTube** Visit our YouTube site for assembly videos :
www.youtube.com/user/Footballgoalposts

MADE IN ENGLAND www.itsagoal.net
WORLDWIDE © COPYRIGHT 2001 ITSA Goal Posts Ltd, ALL RIGHTS RESERVED

TYPES OF GOAL NET FIXINGS

Goalposts are made in Steel, Aluminium and uPVC. Various net fixings are designed for different goalpost materials and also the type of goalpost usage. For example, goal post that include Arrowhead net fixings are designed so that the goal nets can be easily removed after games so are more suited to portable goals. The Arrow head net fixings are made in polypropylene for plastic goals and strengthened industrial nylon for steel goalposts. Whatever your goal post design Upvc goals, Folding goals, Roller goals, Steel Anti-theft goals or Stadium Goals please contact us for advice on the best fixings for your situation. Visit - <https://www.soccertackle.com/net-fixings-for-goals-339-c.asp>



Goalpost Slot Net Fixing

A net fixing that works on most aluminum goalposts that have a slot on the rear of the posts. This net fixing can be left in place in the slot on the goal extrusion or can be twisted out and left attached in position on the net. To attached the net turn the net fixing upside down and lay it into the slot with the opening facing up. Do this with goal post extrusion laid on the ground. The two lugs on the top of the fixing will hold the fixing clip firmly in the goalpost slot upside down to enable the net to be pushed through the opening on the back of the fixing. This is a unique design feature that makes it easier to insert the net inside the fixing compared to other similar types of net fittings. Much easier to fit than other similar net fixings.



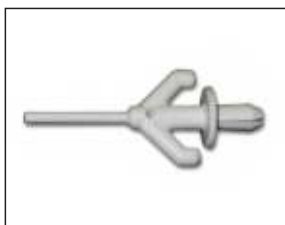
Quick Release Net Fixing

Slide the net fixings into the slot on the rear of the aluminum goalpost extrusion and twist ninety degrees to secure. Position the fixings not more than 340mm apart to conform to the latest goalpost safety standards. These fixings will fit into most aluminum goalposts with rear slots. The recessed net fixing is designed to be left in position on the goalposts and nets are simply slotted into the middle of the clip and rotated ninety degrees to hold the net in place. To remove the net just twist sideways ninety degrees and lift out. Fast easy quick release net fitting.



Arrow Net Hooks For Metal Goalpost Net Fixing

If your goalposts are not already drilled, drill posts using a 8.8 mm drill bit. approx 12" (300mm) apart. Insert net fixings into holes on crossbar and upright sections. A locking pin is located on the top of the net fixing. Do not throw the locking pins away, push locking pin fully into the net fixing, this will secure it in place. Important - the pins are malleable and they may bend - be careful, do not bend the pins. You must carefully insert the pin using your fingers as far inside the net fitting. Once inserted most of the way inside you can then use a mallet to hit the pin fully down to lock.



Arrow Net Hooks Made in white plastic for uPVC Goalposts

If your goalposts are not already drilled, drill posts using 8.6mm drill bit. approx 12" (300mm) apart. Insert net fixings into holes on crossbar and upright sections. A locking pin is located on the top of the net fixing. Do not throw the locking pins away. Push locking pin fully into the net fixing, this will secure it in place.



Permanent Net Ties

Strong permanent net ties used to secure the goal net to the posts. These attach the net to the goalposts and are permanently attached when tightened and can only be removed by cutting off. Ties are available in different lengths, larger ties for posts up to 70mm diameter and smaller net ties used for the sloping back net support tubes up to 40mm diameter. larger ties can have the excess trimmed off for a neat finish.



Releasable Net Ties

The net tie is removable from the goal post, The video demonstrates the tie is firstly wrapped to the netting cord and then the tie is wrapped and attached to the goal frame. This allows the net to be removed after the game and the ties can be left in place on the net for the next game. White industrial nylon goal net ties. The ties are used to attach nets to goal posts along the ground base or up the rear net support stanchions. They can be used on any posts up to size 68mm Dia. When used on the ground frame they prevent goal nets from fraying along the base as with all other types of clips that pull the net under the post and into contact with the ground.



Fastclip style

Releasable net fittings used to secure the goal net to the posts. This type of fitting requires the net to wrap around the front of the posts which can look unsightly, arrow fixings are an improvement as they are at the back of the posts and the net does not need to wrap around posts.

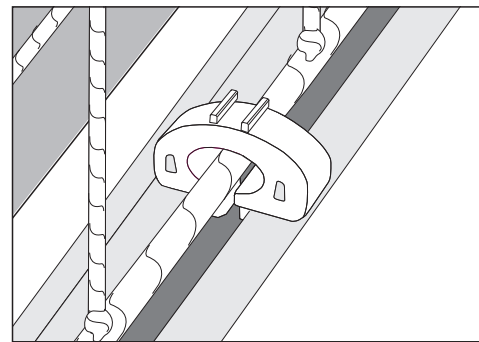
MADE IN ENGLAND www.itsagoal.net

WORLDWIDE © COPYRIGHT 2001 ITSA Goal Posts Ltd, ALL RIGHTS RESERVED

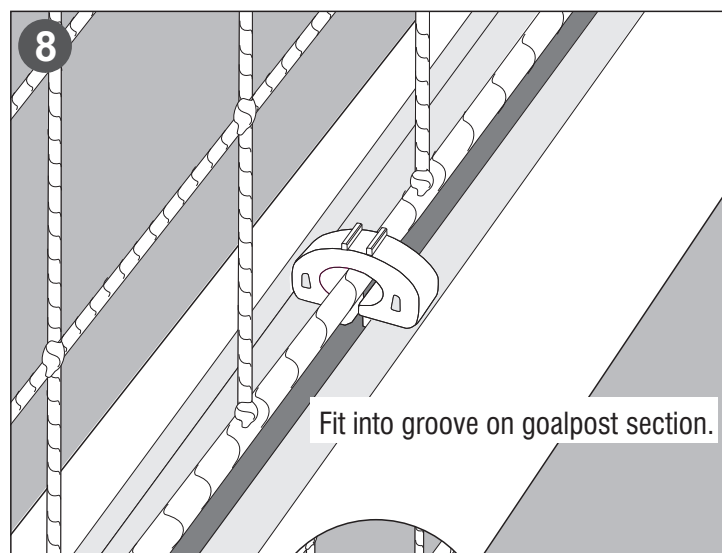
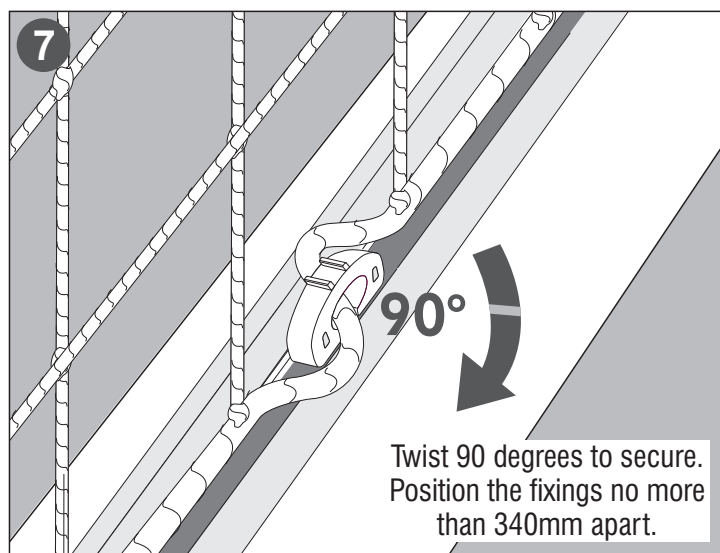
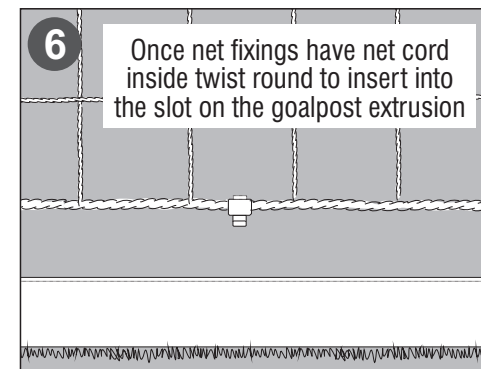
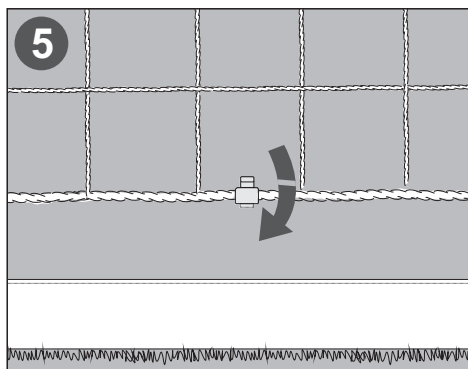
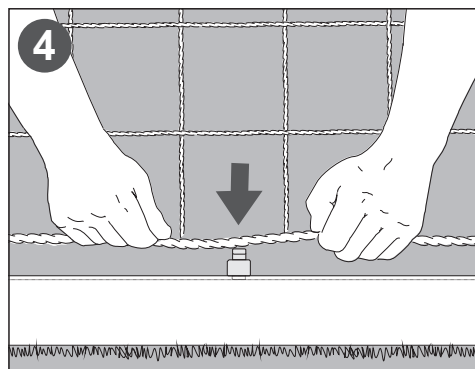
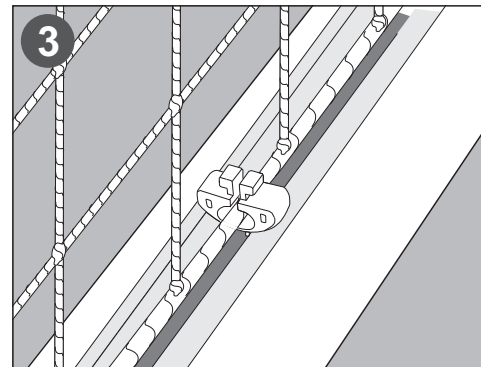
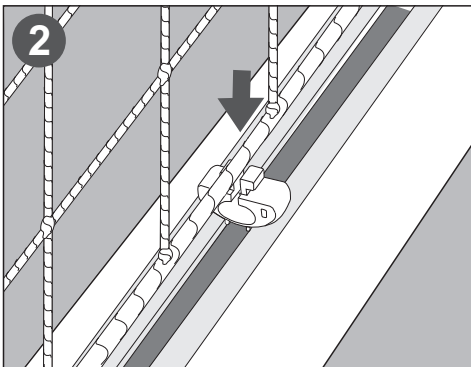
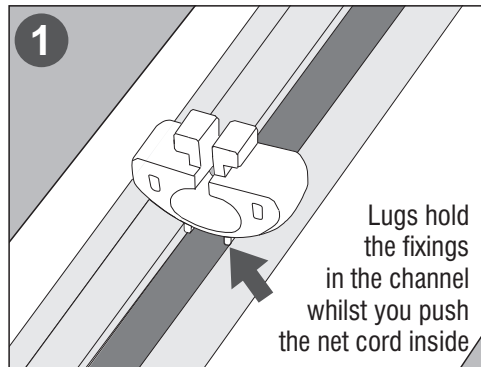
WE RESERVE THE RIGHTS TO AMEND THE SPECIFICATIONS OF OUR SOCCER PRODUCTS IN THE INTEREST OF CONTINUED DEVELOPMENT. YOUR PRODUCT THEREFORE MAY DIFFER LIGHTLY TO THOSE ILLUSTRATED. E&OE

Goalpost Slot Net Fixing

A net fixing that works on most aluminum goalposts that have a slot on the rear of the posts. This net fixing can be left in place in the slot on the goal extrusion or can be twisted out and left attached in position on the net. To attach the net turn the net fixing upside down and lay it into the slot with the opening facing up. Do this with goal post extrusion laid on the ground. The two lugs on the top of the fixing will hold the fixing clip firmly in the goalpost slot upside down to enable the net to be pushed through the opening on the back of the fixing. This is a unique design feature that makes it easier to insert the net inside the fixing compared to other similar types of net fittings. Much easier to fit than other similar net fixings.



Fitting Instructions

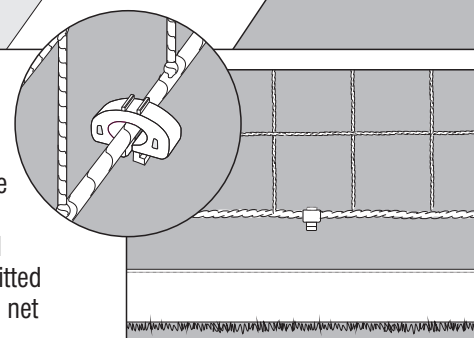


HELPFUL TIPS

We recommend fitting two Slot net fixings close together on corners of the uprights and crossbar and at the foot of posts and also in the middle of the crossbar and middle of the uprights for extra strength and to create a professionally fitted goal net.

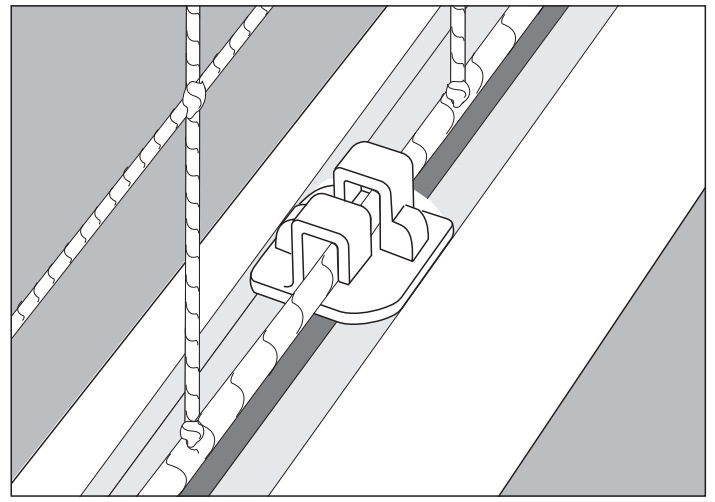
REMOVING NETS FROM GOALS

The design of this fixings allows the goal net to be easily removed from the goalposts whilst leaving the fixings in place on the nets. Hold the net and fixing and turn 90 degrees to release the net from the goal frame. The net can be stored and when the net is refitted the fixings are already affixed in position on the goal net.

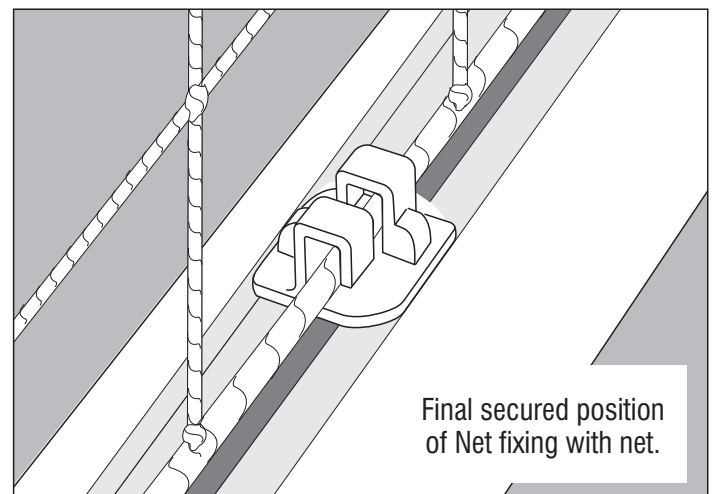
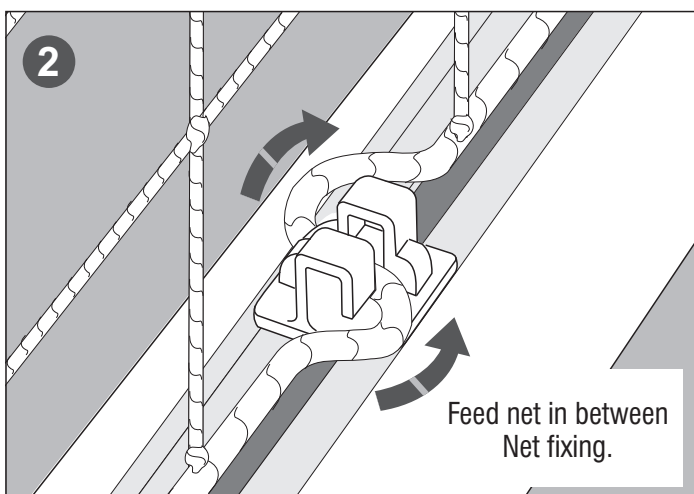
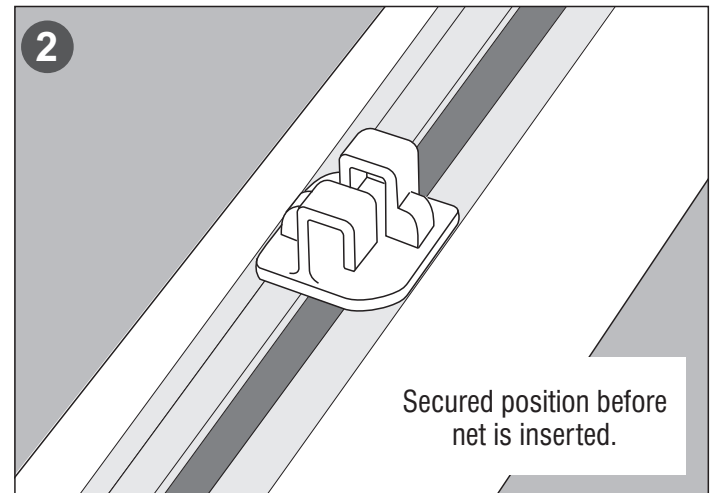
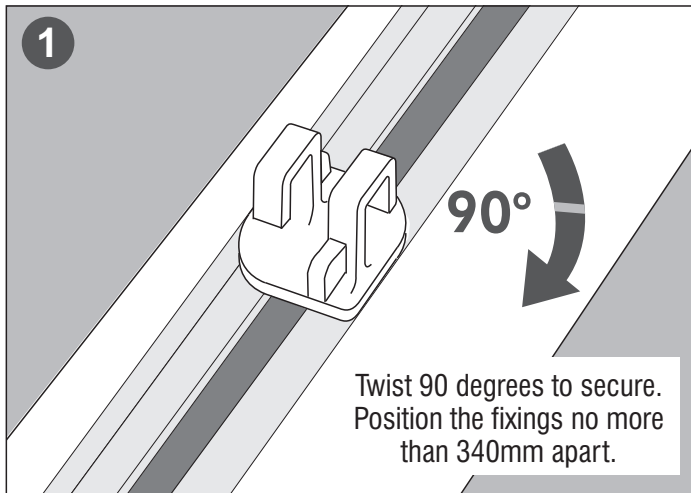


Quick Release Net Fixing

Slide the net fixings into the slot on the rear of the aluminum goalpost extrusion and twist ninety degrees to secure. Position the fixings not more than 340mm apart to conform to the latest goalpost safety standards. These fixings will fit into most aluminum goalposts with rear slots. The recessed net fixing is designed to be left in position on the goalposts and nets are simply slotted into the middle of the clip and rotated ninety degrees to hold the net in place. To remove the net just twist sideways ninety degrees and lift out. Fast easy quick release net fitting.



Fitting Instructions



Note: If the net is to be permanently attached to the goal we offer a different Slot fittings, visit itsagoal.net for more information.

HELPFUL TIP: We recommend fitting two net fixings close together on corners of the uprights and crossbar and at the foot of posts and also in the middle of the crossbar and middle of the uprights for extra strength and to create a professionally fitted goal net.

MADE IN ENGLAND www.itsagoal.net

WORLDWIDE © COPYRIGHT 2001 ITSA Goal Posts Ltd, ALL RIGHTS RESERVED

WE RESERVE THE RIGHTS TO AMEND THE SPECIFICATIONS OF OUR SOCCER PRODUCTS IN THE INTEREST OF CONTINUED DEVELOPMENT. YOUR PRODUCT THEREFORE MAY DIFFER LIGHTLY TO THOSE ILLUSTRATED. E&OE

Arrow Net Hooks For Metal Goalpost Net Fixing

Made in white industrial nylon for metal goalposts.

If your goalposts are not already drilled, drill posts using a **8.8 mm** drill bit. Approx 12" (300mm) apart.

Insert net fixings into holes on crossbar and upright sections.

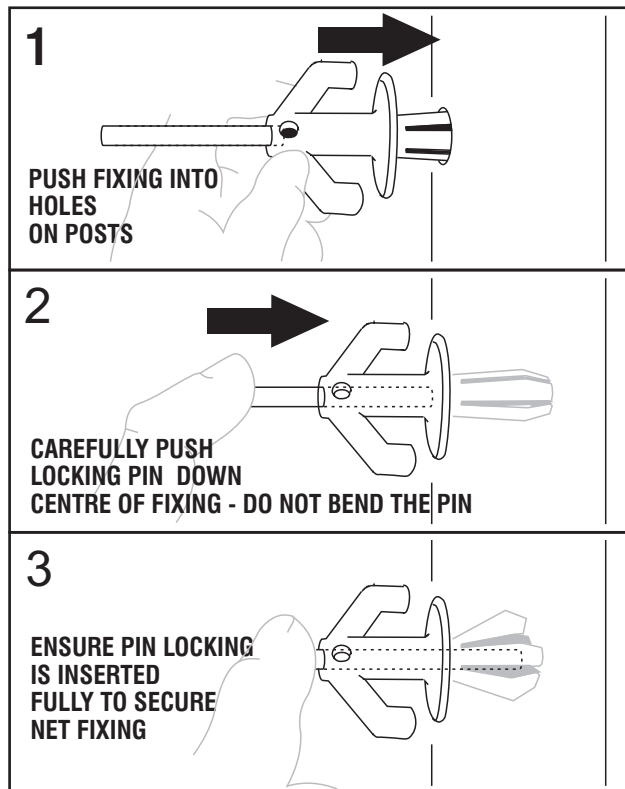
A locking pin is located on the top of the net fixing.

Do not throw the locking pins away

Push locking pin fully into the net fixing, this will secure it in place.

Important - the pins are malleable and they may bend - do not bend the pins.

You must carefully insert the pin using your fingers as far inside the net fitting. Once inserted most of the way inside you can then use a mallet to hit the pin fully down to lock.



Arrow Net Hooks For Plastic Goalpost Net Fixing

Made in white plastic for uPVC Goalposts

If your goalposts are not already drilled, drill posts using **8.6mm** drill bit. Approx 12" (300mm) apart.

Insert net fixings into holes on crossbar and upright sections.

A locking pin is located on the top of the net fixing.

Do not throw the locking pins away.

Push locking pin fully into the net fixing, this will secure it in place.



CE NOT SUITABLE FOR CHILDREN UNDER 36 MONTHS UNTIL ASSEMBLED DUE TO SMALL PARTS.

NOTE: IF NET HOOKS WILL NOT STAY IN PLACE WHEN THE SECURING PIN IS INSERTED, THE PIN MAY HAVE BECOME WORN, AS A TEMPORARY MEASURE YOU CAN ADD TAPE AROUND THE MIDDLE OF THE PIN THIS SHOULD HELP TIGHTEN THE PIN INSIDE THE FIXING.

 Visit our YouTube site for assembly videos : www.youtube.com/user/Footballgoalposts

MADE IN ENGLAND www.itsagoal.net

WORLDWIDE © COPYRIGHT 2001 ITSA Goal Posts Ltd, ALL RIGHTS RESERVED

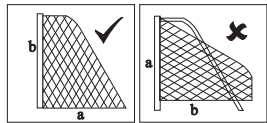
WE RESERVE THE RIGHTS TO AMEND THE SPECIFICATIONS OF OUR SOCCER PRODUCTS IN THE INTEREST OF CONTINUED DEVELOPMENT. YOUR PRODUCT THEREFORE MAY DIFFER LIGHTLY TO THOSE ILLUSTRATED. E&OE

FITTING A STANDARD SHAPED NET

STEP BY STEP NET FITTING

STEP 1

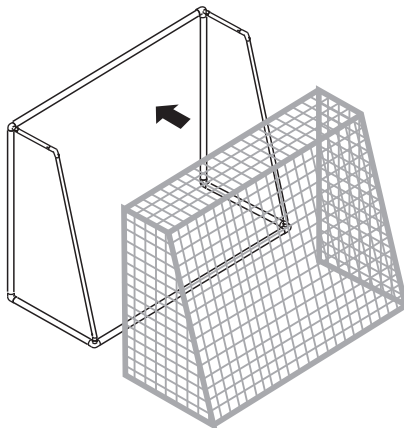
Open net and check the lengths of a and b correspond with the diagram below.



STEP 2

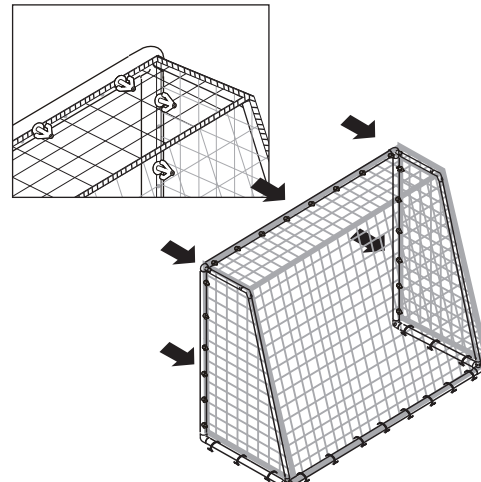
With the net the correct way round lift the net onto the goalpost frame. This is easier with two people.

NOTE: If your net does not fit the first time, you may be fitting it to the goal frame upside down i.e. that is to say the net from the crossbar to the floor (a) is longer than the length of the net to the bottom of the upright (b)



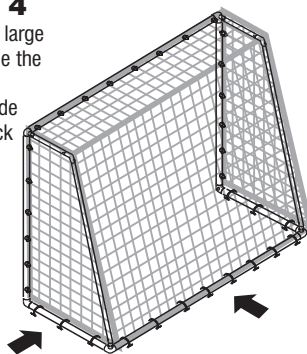
STEP 3

Attach the corners first, where the upright posts meets the crossbar as shown. Then attach the net to the post using the Arrow head net fixings on crossbar and uprights.



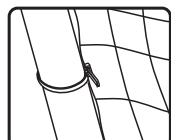
STEP 4

Using the large net ties, tie the net to the ground side frame back ground frame.

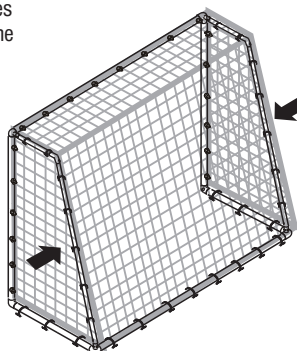


STEP 5

Using the small net ties attach the net down the back of the sloping back net supports as shown to the posts as shown.



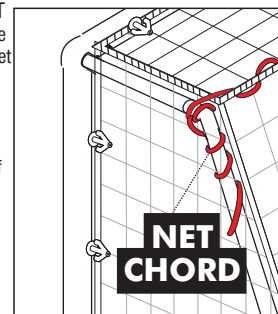
OPTIONAL - STANCHION TIES



STEP 6

NET CORD - ROOF TO THE NET

To help define the roof of the net, tie the cord to one side and pull the net chord tight and wrap neatly down and around the stanchion section. If you are regularly attaching or detaching the net then apply coloured tape to the roof corners of net to help identify the roof area.

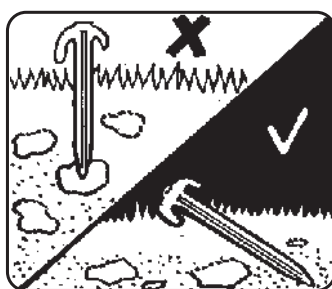
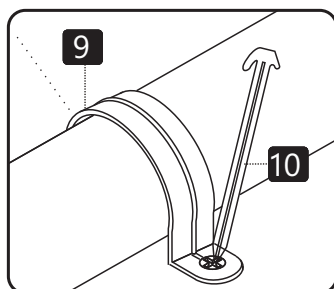


There are various methods to safely, securely anchor or counter balance your goal, the methods below demonstrate the Itsa Goal uPVC goals. To properly anchor your goal always follow the fitting instructions supplied with your goalpost and follow the Football Association's guidance.

WARNING: Check the position of any underground services before using the ground anchors and pegs. We take no responsibility for any damage or injury caused in this manner.

HARD SURFACES: to prevent damage to goal or it's components, loosen soil with a steel pole and moisten with some water before inserting the ground anchors.

ANCHORING YOUR GOAL ON GRASS - POSITION YOUR GOAL ON A LEVEL PLAYING SURFACE. PLACE THE MULTI-SURFACE ANCHOR OVER EACH SIDE OF THE GROUND FRAME (POSITIONS SHOWN) HAMMER THE PEGS THROUGH THE HOLES (DO NOT USE METAL HAMMERS USE RUBBER MALLETS) ON THE ANCHOR DOWN UNDER THE FRAME INTO THE GRASS ADDITIONAL ANCHORS OR LARGER PEGS CAN BE PURCHASED FOR USE ON SOFT GROUND OR SAND. THESE ANCHORS CAN BE USED FOR HARD SURFACES SUCH AS TARMAC WITH OPTIONAL BOLTS. ON HOT/SUNNY DAYS TARMACDAM SOFTENS AND THEREFORE TO ANCHOR



LONGER GROUND PEGS ARE AVAILABLE SEPARATELY.

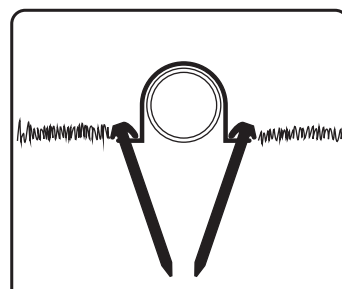
STANDARD

200mm

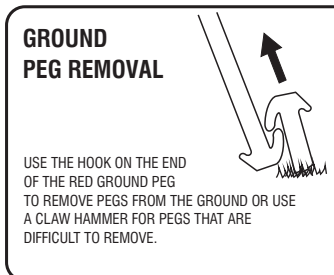
SOFTER GROUND

300mm

Longer pegs are to be used on sandy or Soft ground earth. A risk assessment of soil conditions suitability should be carried out when anchors are to be used.

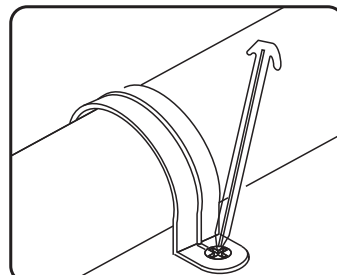
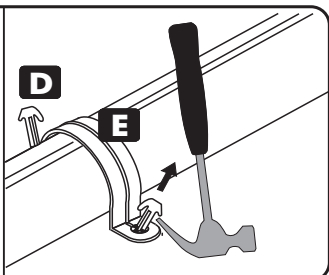


INSERT MULTI-SURFACE ANCHOR PEGS FULLY

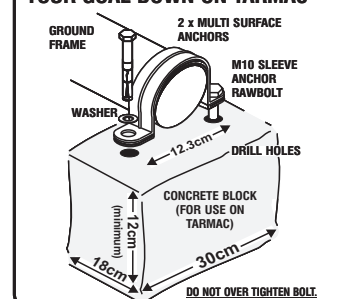


GROUND PEG REMOVAL

USE THE HOOK ON THE END OF THE RED GROUND PEG TO REMOVE PEGS FROM THE GROUND OR USE A CLAW HAMMER FOR PEGS THAT ARE DIFFICULT TO REMOVE.



THIS METHOD SECURELY ANCHORS YOUR GOAL DOWN ON TARMAC



MADE IN ENGLAND www.itsagoal.net

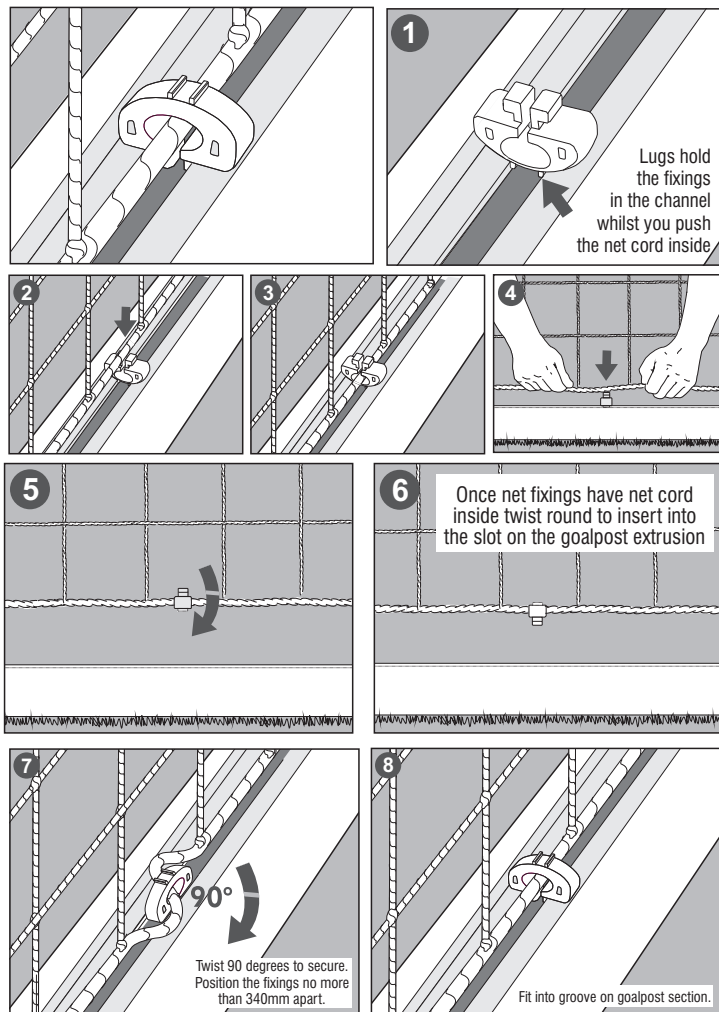
WORLDWIDE © COPYRIGHT 2001 ITSA Goal Posts Ltd, ALL RIGHTS RESERVED

WE RESERVE THE RIGHTS TO AMEND THE SPECIFICATIONS OF OUR SOCCER PRODUCTS IN THE INTEREST OF CONTINUED DEVELOPMENT. YOUR PRODUCT THEREFORE MAY DIFFER SLIGHTLY TO THOSE ILLUSTRATED. E&OE

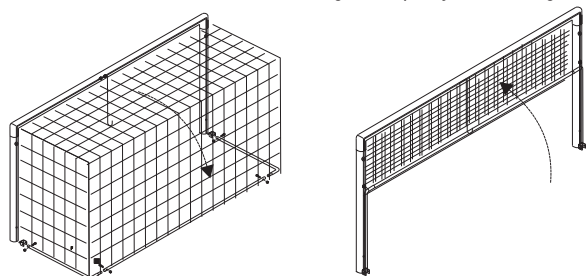
FITTING A BOX SHAPED NET

Goalpost Slot Net Fixing Fitting Instructions

A net fixing that works on most aluminum goalposts that have a slot on the rear of the posts. This net fixing can be left in place in the slot on the goal extrusion or can be twisted out and left attached in position on the net. To attach the net turn the net fixing upside down and lay it into the slot with the opening facing up. Do this with goal post extrusion laid on the ground. The two lugs on the top of the fixing will hold the fixing clip firmly in the goalpost slot upside down to enable the net to be pushed through the opening on the back of the fixing. This is a unique design feature that makes it easier to insert the net inside the fixing compared to other similar types of net fittings. Much easier to fit than other similar net fixings.



OPTIONAL NET RETAINER - designed to quickly lift nets for grass cutting.

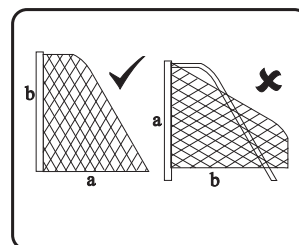


Net Fixing

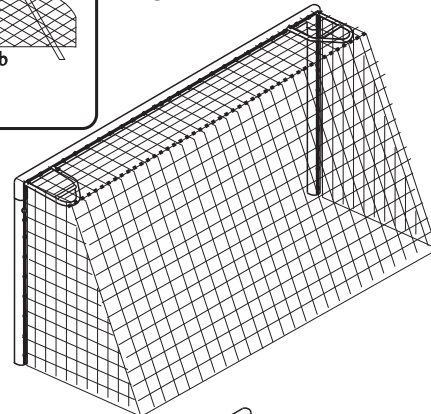
STEP 1 Attach the net to the net fixings on the crossbar and uprights. Fit the corners of the net to the top of each upright first then clip the net onto all other net fixings.

STEP 2 Insert the red safety pegs (optional) to peg your net to the ground, fit corners first. Always insert pegs at an angle. When removing pegs use the back of a peg to take out. Do not remove pegs by pulling nets.

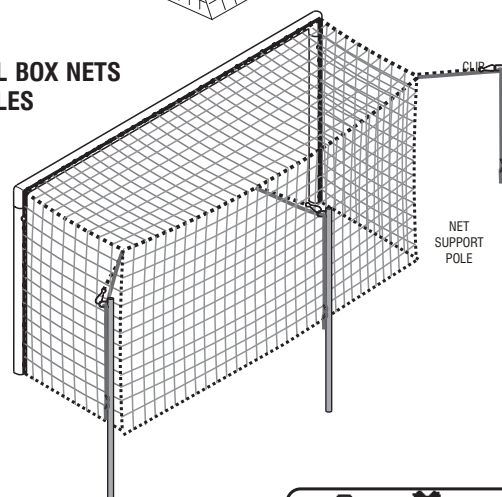
STEP 4 The net will have a net head cord. This is to lift the roof of the goal up behind the crossbar. Wrap the cord on the top of the net support on one side and tie off then go to the other side and pull tight and then wrap around the top support and tie off.



STANDARD NET



OPTIONAL BOX NETS WITH POLES

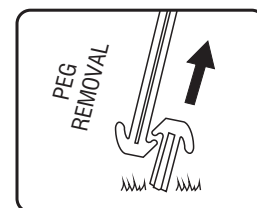
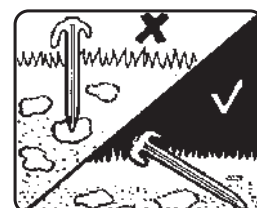


GROUND PEGS

LONGER GROUND PEGS ARE AVAILABLE SEPARATELY.



Longer pegs are to be used on sandy or soft ground earth. **A risk assessment of soil conditions suitability should be carried out when anchors are to be used.**



WORLDWIDE © COPYRIGHT 2001 ITSA GOAL POSTS LTD, ALL RIGHTS RESERVED A REGISTERED DESIGN

MADE IN ENGLAND www.itsagoal.net

WORLDWIDE © COPYRIGHT 2001 ITSA Goal Posts Ltd, ALL RIGHTS RESERVED

WE RESERVE THE RIGHTS TO AMEND THE SPECIFICATIONS OF OUR SOCCER PRODUCTS IN THE INTEREST OF CONTINUED DEVELOPMENT. YOUR PRODUCT THEREFORE MAY DIFFER LIGHTLY TO THOSE ILLUSTRATED. E&OE