

COMPONENTS

A	FLANGED CORNER BRACKET with attached FLANGED BUSHES 4 HOLES	x4	
X	FLANGED CORNER BRACKET with attached FLANGED BUSHES 8 HOLES	x2	
B	NYLON SPIGOT	x4	
C	BLANKING CAP	x2	
D	MULTI-SURFACE ANCHOR	x6	
E	GROUND PEG	x12	
F	NYLON STANCHION ELBOW	x2	
G	NYLON LOWER BACK STANCHION CONNECTOR	x2	
GFNF	GROUND FRAME NET FIXING	x28	
J	M10 SOCKET DOME SCREW AND HEX DOME NUT - 80mm LONG	x12	
K	M8 HEX SCREW AND HEX DOME NUT - 50mm LONG	x12	
L	ARROW HEAD NET FIXING with attached LOCKING PIN	x30	
I	LARGE NET TIES - ground frame	x12	
M	SMALL STANCHION NET TIES	x12	
AK	HEX KEY FOR COMPONENT J	x1	
NET	GOAL NET 16' x 7'	x1	

ALUMINIUM FLAT-PACK 16' X 7' YOUTH GOAL (FLAT-PACK)

(16' x 7' Multi-Surface) - Two section crossbar.



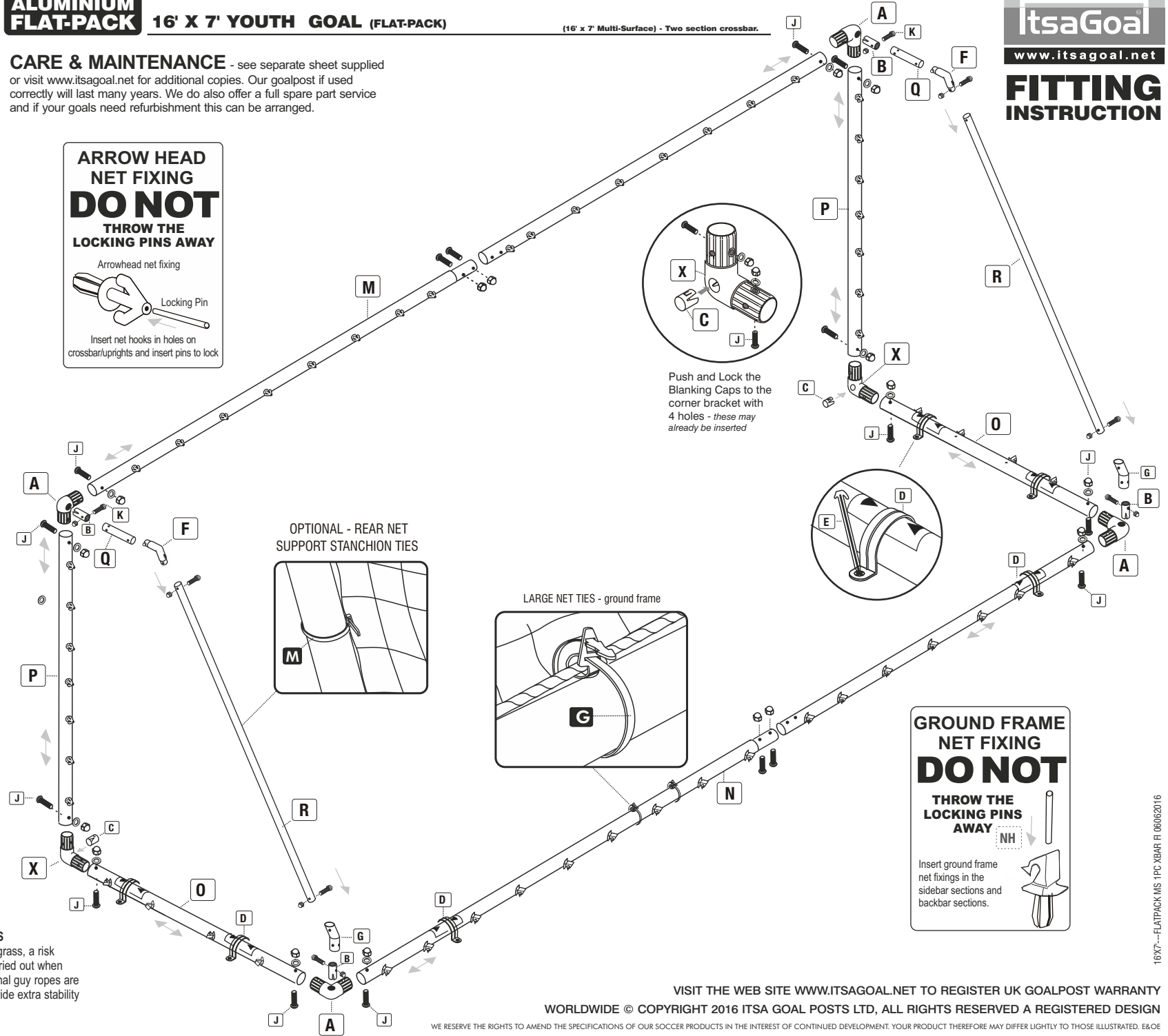
FITTING INSTRUCTION

CARE & MAINTENANCE - see separate sheet supplied or visit www.itsagoal.net for additional copies. Our goalpost if used correctly will last many years. We do also offer a full spare part service and if your goals need refurbishment this can be arranged.

ARROW HEAD NET FIXING
DO NOT THROW THE LOCKING PINS AWAY

Arrowhead net fixing

Insert net hooks in holes on crossbar/uprights and insert pins to lock



GROUND FRAME NET FIXING
DO NOT THROW THE LOCKING PINS AWAY

Insert ground frame net fixings in the sidebar sections and backbar sections.

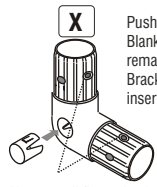
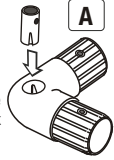
GOAL POSTS MUST BE ANCHORED AT ALL TIMES
Optional longer pegs are available for use on sandy ground. On grass, a risk assessment of soil and weather conditions suitability should be carried out when anchors or optional counter weights are to be used. Please note optional guy ropes are available; the guy ropes can be fixed to both sides of the goals to provide extra stability and reduce sideways sway. TEL: 0114 2434200

16X7--FLATPACK MS-1PC XBAR FI 06062016

CORNER BRACKETS

BEFORE YOU START TO ASSEMBLE YOUR GOAL PREPARE THESE FIRST.

Push and Lock the Spigots to four of the six Corner Brackets.

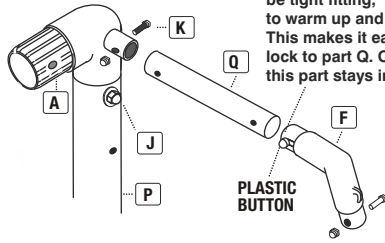


Push and Lock the Blanking Caps to the two remaining Corner Brackets. (already inserted)

Note: small flange bushes are already inserted to create tight fitting bolts.

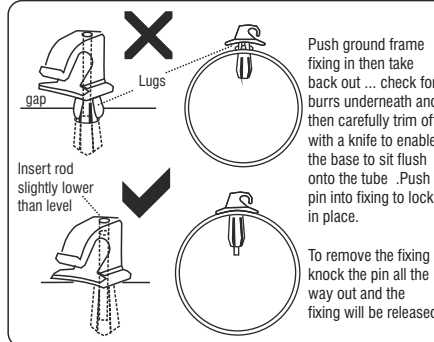
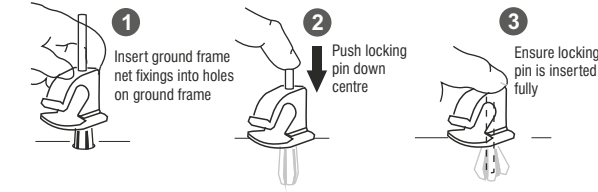
CORNER BRACKET, STANCHION & ELBOW ASSEMBLY

NOTE: Ensure Top Stanchion holes are aligned with the Stanchion Elbow.



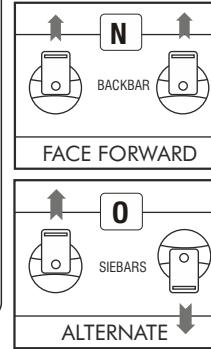
NOTE - The Plastic button on the stanchion elbow is designed to be tight fitting, push in and out to warm up and make pliable. This makes it easier to insert and lock to part Q. Once connected this part stays in place.

DO NOT THROW THE LOCKING PINS AWAY



On back frame fix all the same way with opening facing inwards. On side frames along the ground fit alternate.

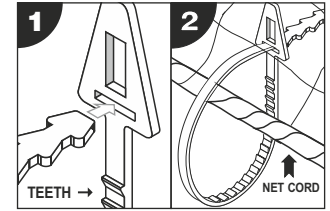
FIXING POSITIONS



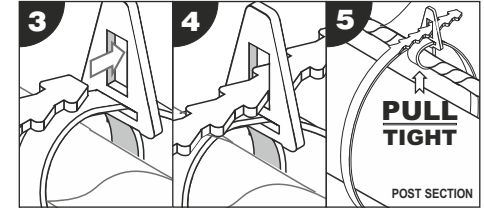
REMOVABLE NET TIES - OPTIONAL

ENSURE THAT YOU TIGHTEN THE NET TIE AROUND THE NET-CORD (no more than 340mm apart)

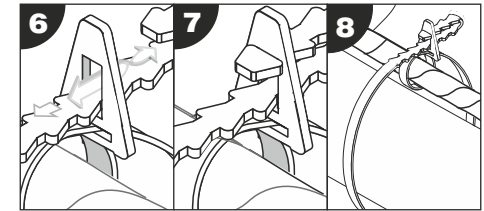
Ensure the teeth of the Net tie are facing you (see step 1). Loop the Net Tie around the Net Cord and slide the end into the horizontal slot and pull tight onto Net Cord (see step 1-2).



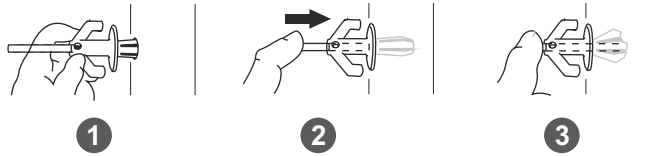
The vertical slot of the Net Tie is used to secure the net to the post. Loop the Net Tie around the post and insert through vertical slot and twist to lock. (steps 3 - 5).



Any excess Net Tie can looped back into the vertical slot. This will also secure the net tie in a fixed position (steps 6 - 8). If Net Ties are to be removed after use then do not loop back into vertical slot.



DO NOT THROW THE LOCKING PINS AWAY



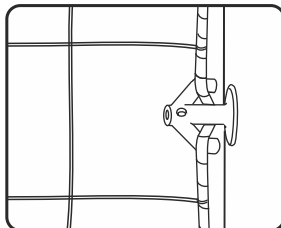
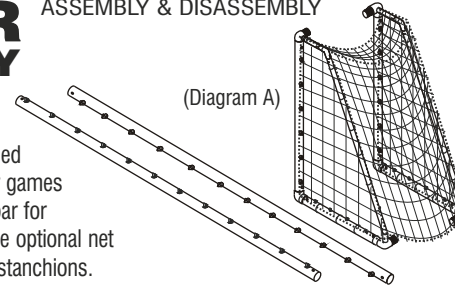
Insert Arrow Head into Holes on posts

Push locking pin Down centre of Arrow Head

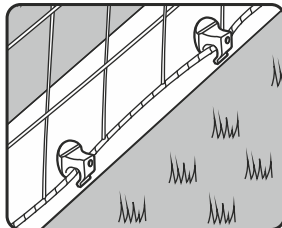
Ensure locking pin is inserted Fully in the posts

FASTER ASSEMBLY & DISASSEMBLY MATCH DAY

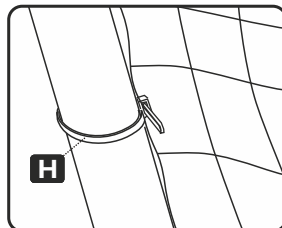
The goal net can be left attached to the pre-assembled goal post side frames. After games detach crossbar and back bar for storage. We advise fitting the optional net ties to the side frames and stanchions.



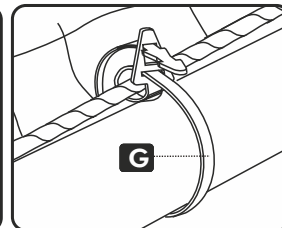
FIT NETS TO ARROWHEAD FIXINGS



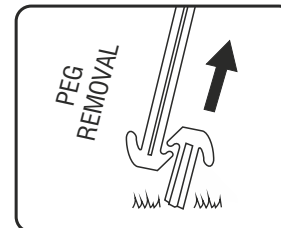
FIT NETS TO GROUND FRAME FIXINGS



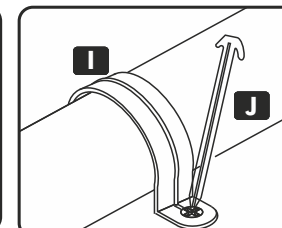
OPTIONAL - STANCHION TIES



OPTIONAL - NET TIES

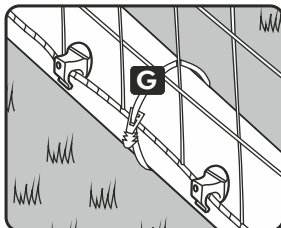


PEG REMOVAL



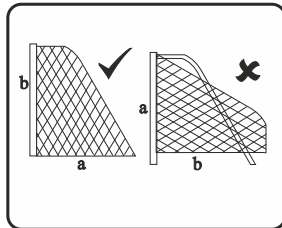
I

J

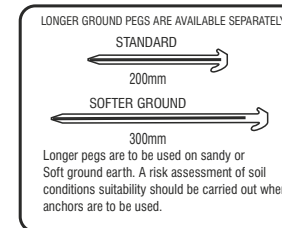
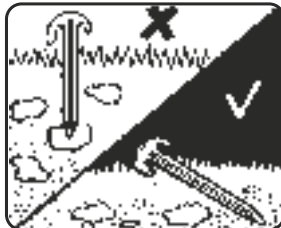


OPTIONAL - small stanchion net ties and larger net ties are ideal to fit nets tightly to the side ground frames and stanchions. This is ideally when nets are left attached to the fully assembled side frames.

On back frame fix all the same way with opening facing inwards. On side frames along the ground fit alternate.



SQUARE MESH Net is cut to shape. Simply throw over the frame and fit each end onto top stanchion by securing on each corner of crossbar. NOTE: If your net does not fit the first time, you may be fitting it to the goal frame upside down i.e. that is to say the net from the crossbar to the floor (a) is longer than the length of the net to the bottom of the upright (b).



LONGER GROUND PEGS ARE AVAILABLE SEPARATELY.

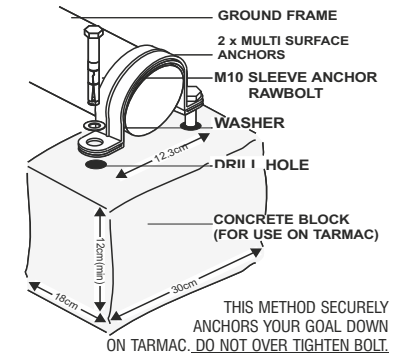
STANDARD

200mm

SOFTER GROUND

300mm

Longer pegs are to be used on sandy or soft ground earth. A risk assessment of soil conditions suitability should be carried out when anchors are to be used.



GROUND FRAME
2 x MULTI SURFACE ANCHORS
M10 SLEEVE ANCHOR RAWBOLT
WASHER
DRILL HOLE
CONCRETE BLOCK (FOR USE ON TARMAC)

THIS METHOD SECURELY ANCHORS YOUR GOAL DOWN ON TARMAC. DO NOT OVER TIGHTEN BOLT.

SPARE PARTS

TEL: 0114 24 34 200

