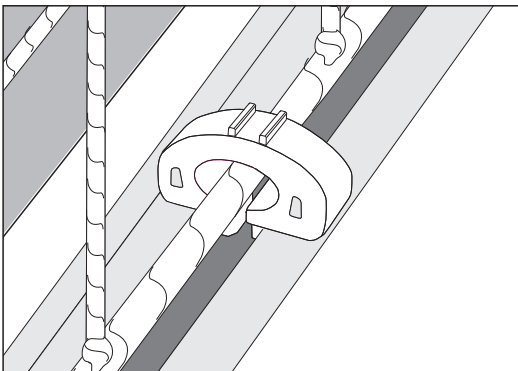


# Goalpost Slot Net Fixing

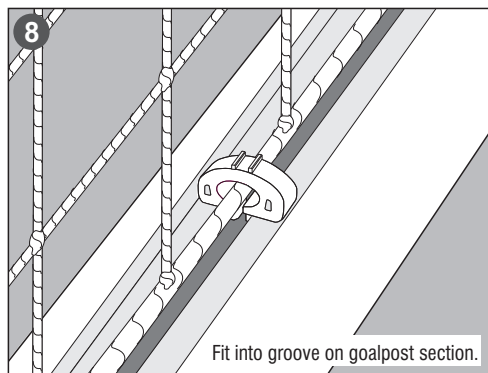
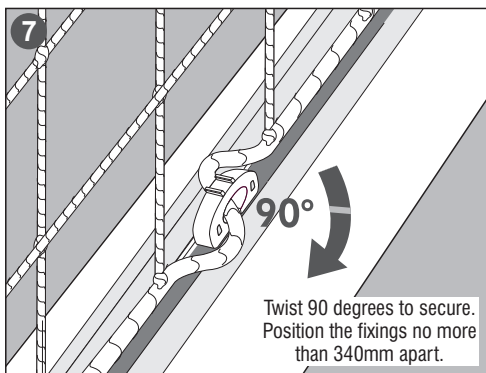
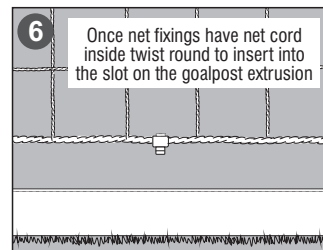
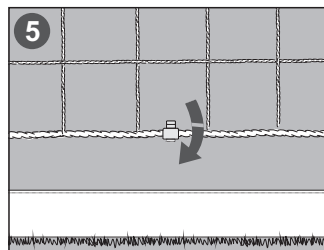
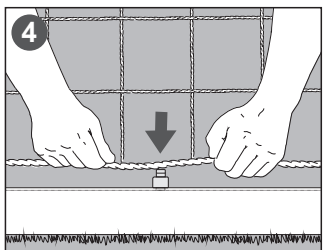
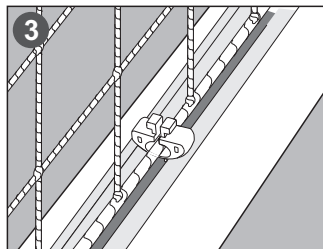
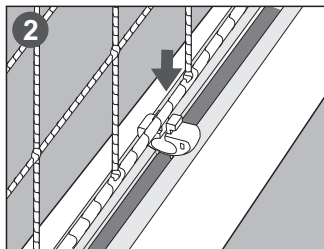
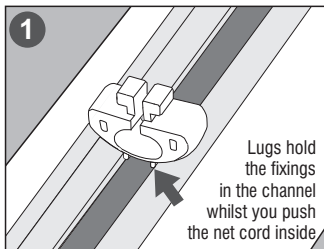
A universal goal net fixing that works on all aluminum goalposts that have a slot on the rear of the posts. This net fixing can be left in place in the slot on the goal extrusion or can be twisted out and left attached in position on the net.

To attached the net turn the net fixing upside down and lay it into the slot with the opening facing up. Do this with goal post extrusion laid on the ground. The two lugs on the top of the fixing will hold the fixing clip firmly in the goalpost slot upside down to enable the net to be pushed through the opening on the back of the fixing.

This is a unique design feature that makes it easier to insert the net inside the fixing compared to other similar types of net fittings. Much easier to fit than other similar net fixings.



## Fitting Instructions



MADE IN ENGLAND [www.itsagoal.net](http://www.itsagoal.net)

WORLDWIDE © COPYRIGHT 2001 ITSA Goal Posts Ltd, ALL RIGHTS RESERVED, ITSA GOAL NET FIXING IS A REGISTERED DESIGN NO. 000000

