

COMPONENTS

A	CORNER BRACKET 4 HOLES	x4	
X	CORNER BRACKET UPRIGHT 8 HOLES	x2	
B	SPIGOT	x4	
C	BLANKING CAP	x2	
D	MULTI-SURFACE ANCHOR	x4	
E	GROUND PEG	x8	
F	STANCHION ELBOW	x2	
G	LOWER BACK STANCHION	x2	
H	LARGE QUICK RELEASE	x10	
I	SMALL QUICK RELEASE BUTTON	x8	
J	NET TIE	x12	
K	M10 NUT AND BOLT	x2	
L	STRAIGHT CONNECTOR	x1	
MW	WHITE PLASTIC ARROW HEAD NET FIXING with LOCKING PIN	x14	
MB	BLACK NYLON ARROW HEAD NET FIXING with LOCKING PIN	x16	
AK	ALLEN KEY	x1	
NET	GOAL NET 16' x 7'	x1	
NF	GROUND FRAME NET FIXING HOOK	x28	

POST SECTIONS

Aluminium Crossbar Only

N	CROSSBAR SECTION ALOY 4844mm LONG - 70mm Diameter	x1	
O	BACKBAR SECTION 2422mm LONG - 68mm Diameter	x2	
P	SIDEBAR SECTION 2422mm LONG - 68mm Diameter	x2	
Q	UPRIGHT SECTION 2422mm LONG - 68mm Diameter	x2	
R	TOP STANCHION TUBE 2422mm LONG - 68mm Diameter	x2	
S	BACK STANCHION TUBE 2422mm LONG - 68mm Diameter	x2	

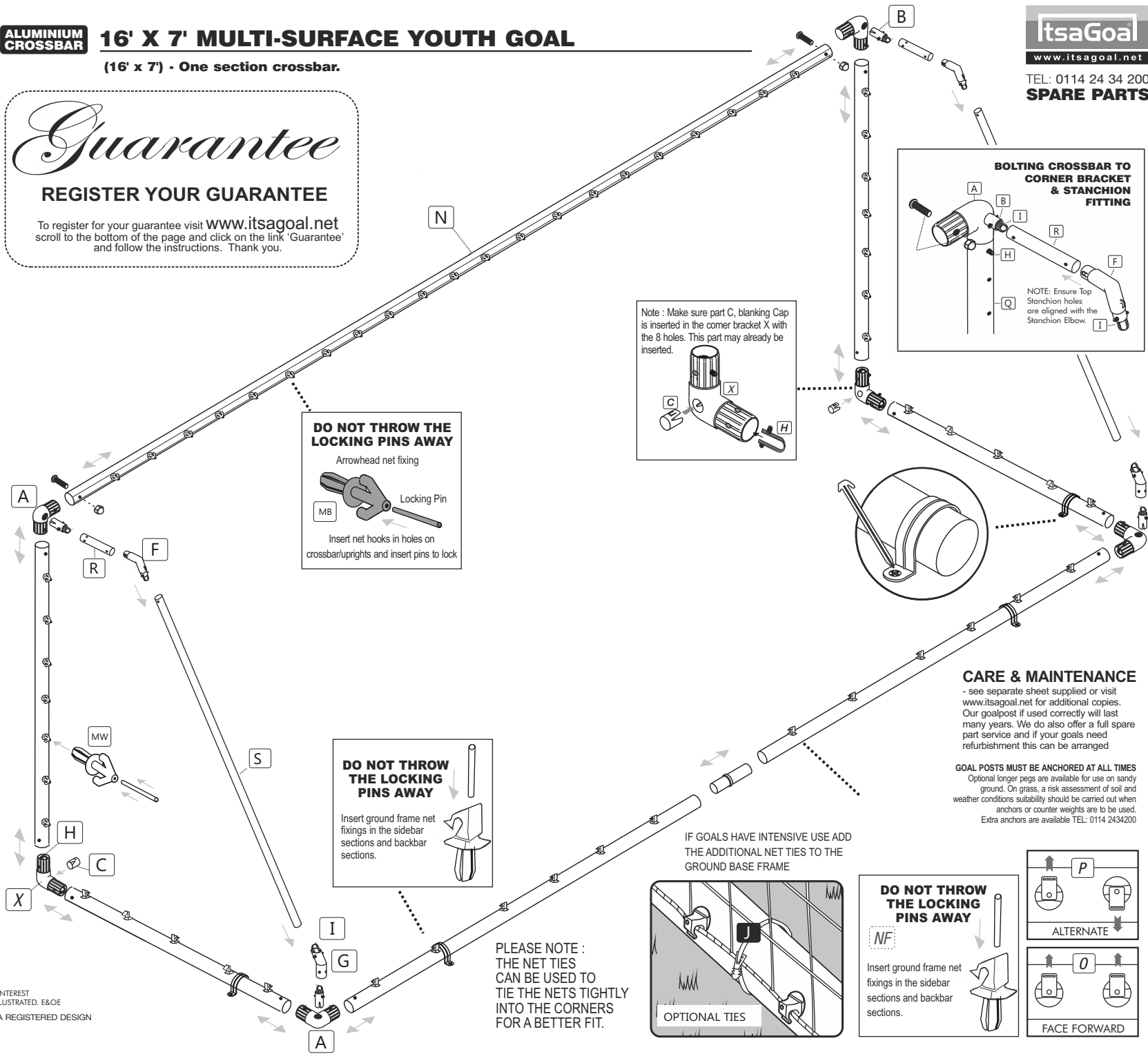
WE RESERVE THE RIGHTS TO AMEND THE SPECIFICATIONS OF OUR SOCCER PRODUCTS IN THE INTEREST OF CONTINUED DEVELOPMENT. YOUR PRODUCT THEREFORE MAY DIFFER SLIGHTLY TO THOSE ILLUSTRATED. E&OE WORLDWIDE © COPYRIGHT 2001 ITSA GOAL POSTS LTD. ALL RIGHTS RESERVED A REGISTERED DESIGN

ALUMINIUM CROSSBAR

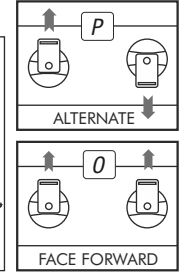
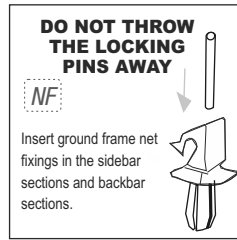
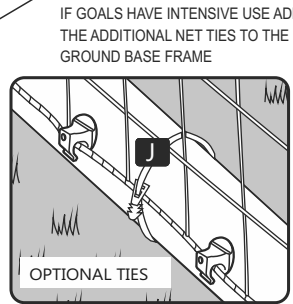
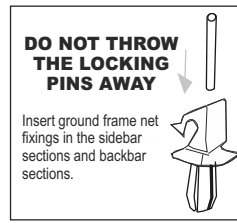
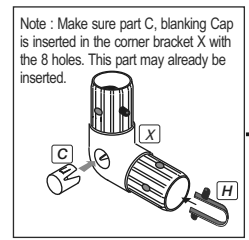
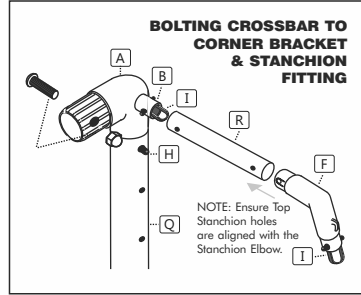
16' X 7' MULTI-SURFACE YOUTH GOAL

(16' x 7') - One section crossbar.

Guarantee
REGISTER YOUR GUARANTEE
 To register for your guarantee visit www.itsagoal.net scroll to the bottom of the page and click on the link 'Guarantee' and follow the instructions. Thank you.



itsaGoal
www.itsagoal.net
 TEL: 0114 24 34 200
SPARE PARTS



CARE & MAINTENANCE
 - see separate sheet supplied or visit www.itsagoal.net for additional copies. Our goalpost if used correctly will last many years. We do also offer a full spare part service and if your goals need refurbishment this can be arranged

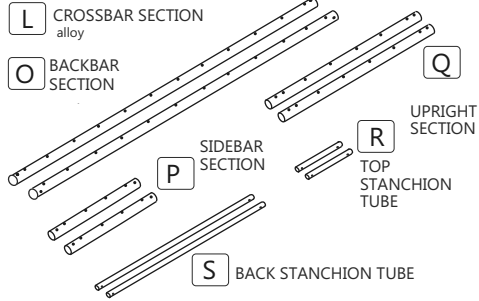
GOAL POSTS MUST BE ANCHORED AT ALL TIMES
 Optional longer pegs are available for use on sandy ground. On grass, a risk assessment of soil and weather conditions suitability should be carried out when anchors or counter weights are to be used. Extra anchors are available TEL: 0114 2434200

PLEASE NOTE: THE NET TIES CAN BE USED TO TIE THE NETS TIGHTLY INTO THE CORNERS FOR A BETTER FIT.

STEP BY STEP ASSEMBLY FOR EASIER ASSEMBLY Use a rubber mallet and also spray furniture polish inside posts. Do not use a metal hammer. Do not apply grease or vaseline.

STEP 1

Lay out all Posts & components



STEP 2

Insert Blanking Cap part C and insert Large Quick Release Button H (x2) into Corner Bracket X. (NOTE: Corner Bracket X is different from Corner Bracket A. Corner Bracket X is to be fitted into the upright posts and has 8 holes.

STEP 3

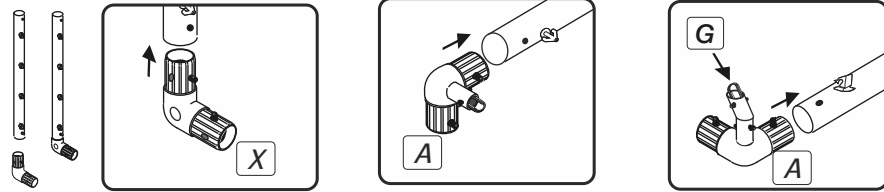
Insert Small Quick Release Black Button I into the Spigot B. Insert Spigot B and insert H (x2) into Corner Bracket A. (NOTE: Corner Bracket A has 4 holes)

STEP 4

Insert Arrow Head Net Fixings MW into Upright Posts and insert black MB fixings into crossbar. **DO NOT THROW AWAY LOCKING PINS**

STEP 5

Insert Ground Frame net Fixings NF into Back bar and Side bar. see details about removing burrs overleaf. **DO NOT THROW AWAY LOCKING PINS**



STEP 9

Attach Side bars P to the ground back bar by slotting into the corners brackets

STEP 10

Attach Upright Q to the Side bars P

STEP 11

Attach Crossbar L to uprights Q

STEP 6

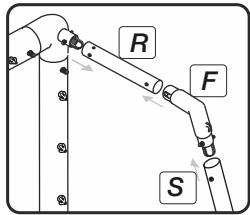
Insert Corner Brackets X into the upright posts Q (uprights have logos on the side)

STEP 7

Insert Corner Brackets A into each end of the crossbar N

STEP 8

Insert Corner Brackets A into each end of the Backbar O



STEP 12

Join top tubes R to elbows F and back tubes S and connect to the goalpost.

STEP 13

Attach Ground Anchors see details of use overleaf.

STEP 14

Attach The Net to the Net Fixings. Start with each corner

TIE A CORD BETWEEN THE TOP SUPPORT TUBES TO SUPPORT THE ROOF OF THE NET (THIS CAN BE LEFT TIED IN POSITION WHEN DISMANTLED)

FASTER MATCH DAY
ASSEMBLY & DISASSEMBLY

The goal net can be left attached to the pre-assembled goal post side frames. After games detach crossbar and back bar for storage. We advise fitting the optional net ties to the side frames and stanchions.

OPTIONAL - Net ties are ideal to fit nets tightly to the side ground frames and stanchions. This is ideally when nets are left attached to the fully assembled side frames.

ANCHORING YOUR GOAL ON GRASS - POSITION YOUR GOAL ON A LEVEL PLAYING SURFACE. PLACE THE MULTI-SURFACE ANCHOR OVER EACH SIDE OF THE GROUND FRAME (POSITIONS SHOWN) HAMMER THE PEGS DOWN UNDER THE FRAME INTO THE GRASS. ADDITIONAL ANCHORS OR LARGER PEGS CAN BE PURCHASED FOR USE ON SOFT GROUND OR SAND. THESE ANCHORS CAN BE USED FOR HARD SURFACES, SUCH AS TARMAC BY USING BOLTS THROUGH THE MULTI SURFACE ANCHORS INTO CONCRETE PADS. COUNTER BALANCE WEIGHTS CAN ALSO BE USED (SUPPLIED SEPARATELY). CHAINS ARE AVAILABLE SEPARATELY THAT CAN BE USED TO SECURE GOALS TO SEPARATE ANCHOR POINTS.

