

COMPONENTS

A	'T' BRACKET with pre inserted nylon bush for top post connection	x2	
B	CORNER BRACKET	x2	
X	CORNER BRACKET UPRIGHT 4 HOLES	x4	
C	SPIGOT	x6	
D	BLANKING CAP	x2	
E	MULTI-SURFACE ANCHOR	x4	
F	GROUND PEG	x8	
G	STANCHION ELBOW	x2	
H	LOWER BACK STANCHION	x2	
I	LARGE QUICK RELEASE BUTTON	x16	
J	SMALL QUICK RELEASE BUTTON	x10	
K	M10 SOCKET DOME SCREW AND HEX DOME NUT - 80mm LONG	x2	
L	NET TIE	x12	
M	ARROW HEAD NET FIXING with attached LOCKING PIN	x24	
NH	GROUND FRAME NET FIXING HOOK	x24	
NET	GOAL NET 12' x 6'	x1	
AK	HEX KEY FOR COMPONENT K	x1	

POST SECTIONS

N	TOP POST SECTION 2422mm LONG - 68mm Diameter	x2	
O	CROSSBAR SECTION 3628mm LONG - 68mm Diameter	x1	
P	BACKBAR SECTION 3628mm LONG - 68mm Diameter	x1	
Q	SIDEBAR SECTION 1360mm LONG - 68mm Diameter	x2	
R	UPRIGHT SECTION 1726mm LONG - 68mm Diameter	x2	
S	TOP STANCHION TUBE 400mm LONG - 40mm Diameter	x2	
T	BACK STANCHION TUBE 1896mm LONG - 40mm Diameter	x2	

CARE & MAINTENANCE

see separate sheet supplied or visit www.itsagoal.net for additional copies. Our goalpost if used correctly will last many years. We do also offer a full spare part service and if your goals need refurbishment this can be arranged

12' X 6' COMBINATION GOAL - MINI SOCCER - MINI RUGBY - MINI-GAELIC

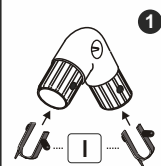
FITTING INSTRUCTION

tsaGoal
www.itsagoal.net

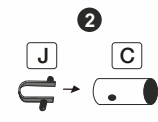
TEL: 0114 24 34 200
SPARE PARTS

CORNER BRACKETS

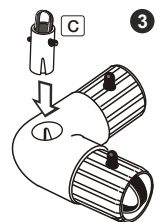
! BEFORE YOU START TO ASSEMBLE YOUR GOAL PREPARE THESE FIRST.



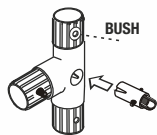
Push and Lock the Large Quick Release Buttons into the ends of the Corner & 'T' Brackets.



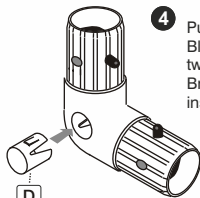
Push and Lock the Small Quick Release Buttons into the ends of the Spigots.



Push and Lock the spigots to two of the four Corner Brackets.



Push and Lock the spigots into the 'T' Brackets.



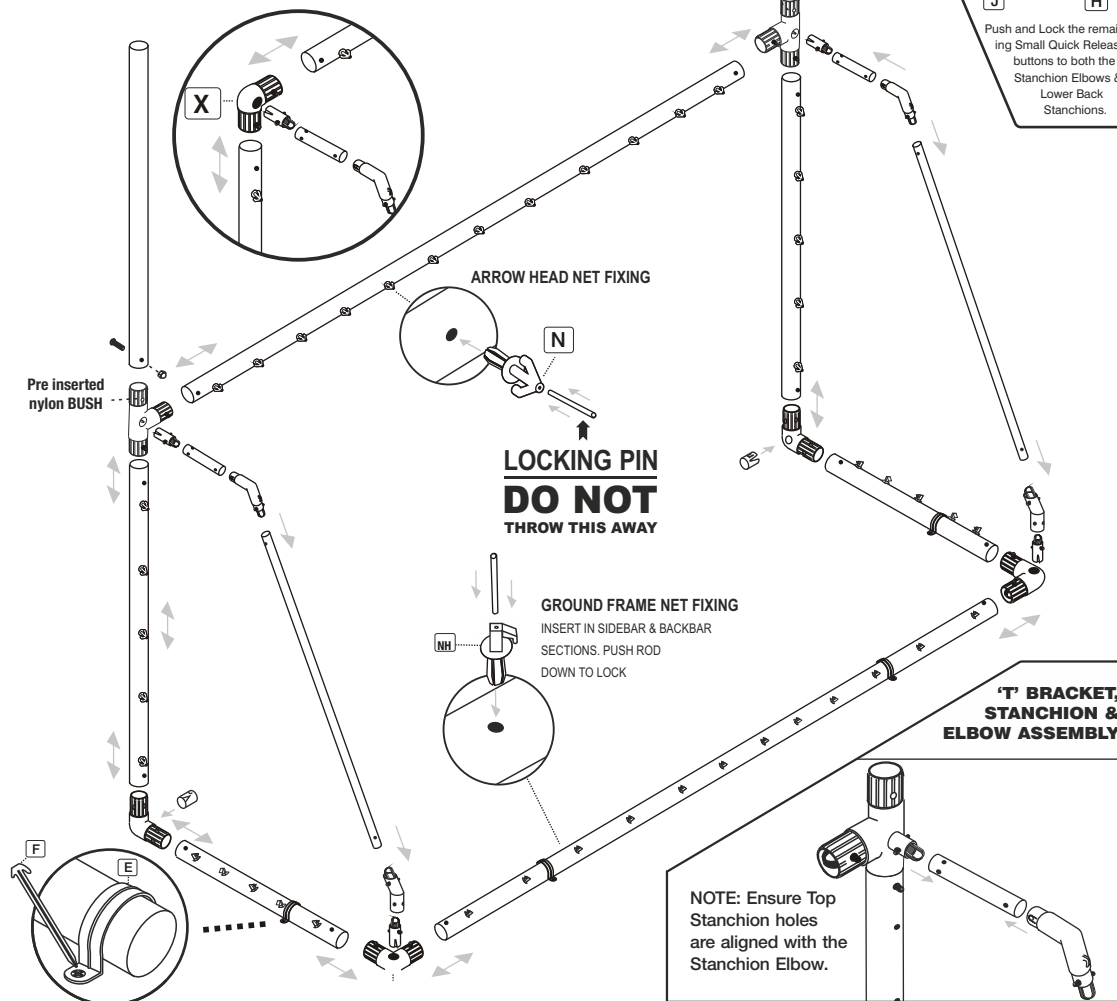
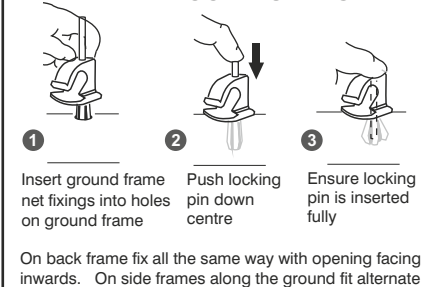
4 Push and Lock the Blanking Caps to the two remaining Corner Brackets. (already inserted)

USE CORNER BRACKET TO MAKE A FOOTBALL GOAL SEE OVER

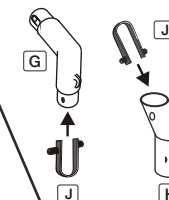
DO NOT THROW THE LOCKING PINS AWAY



GROUND FRAME NET FIXING DO NOT THROW THE LOCKING PINS AWAY



STANCHION ELBOWS & LOWER BACK STANCHIONS



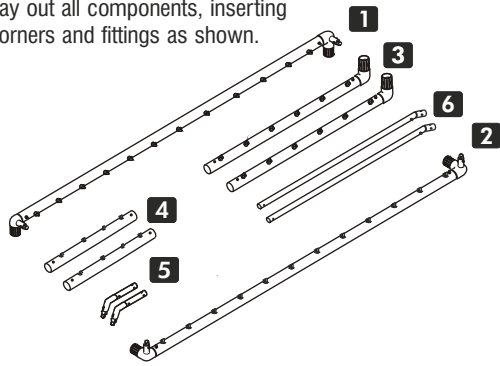
Push and Lock the remaining Small Quick Release buttons to both the Stanchion Elbows & Lower Back Stanchions.

! ALL RELEASE BUTTONS MUST BE INSERTED BEFORE ASSEMBLY.

HOW TO ASSEMBLE THE 12 x 6 FOOTBALL GOAL

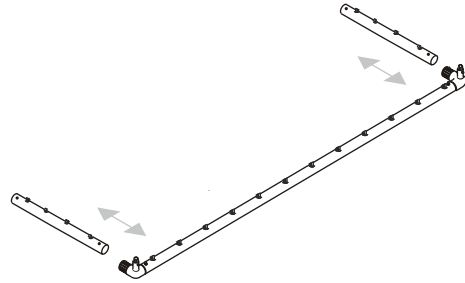
STEP 1

Lay out all components, inserting corners and fittings as shown.



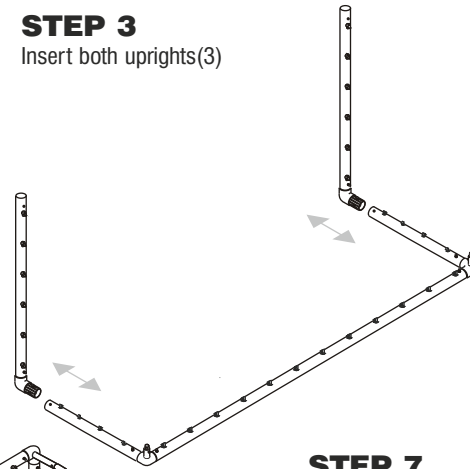
STEP 2

Insert side bars(4) into backbar



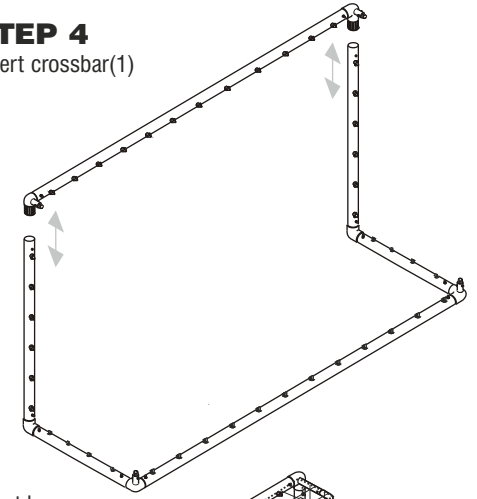
STEP 3

Insert both uprights(3)



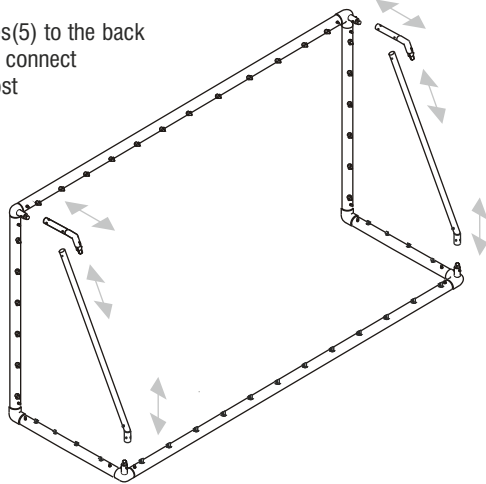
STEP 4

Insert crossbar(1)



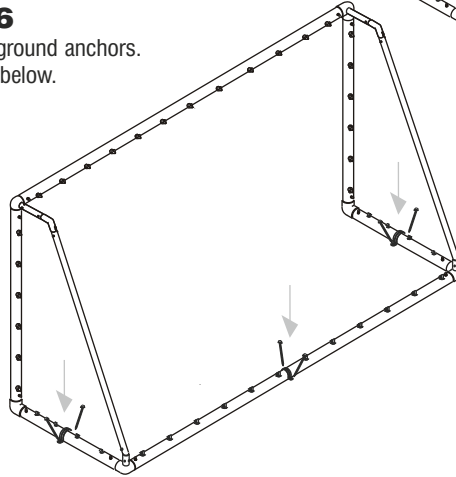
STEP 5

Join top tubes(5) to the back tubes(6) and connect to the goalpost



STEP 6

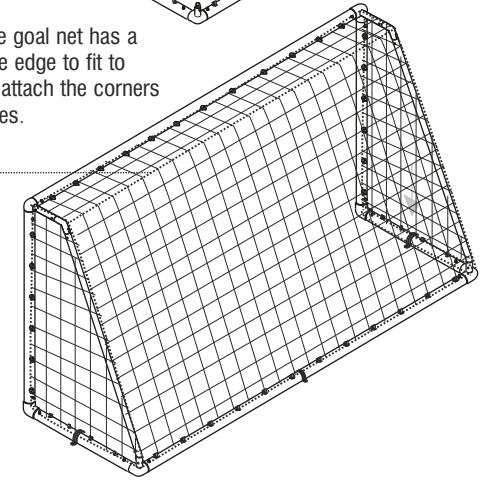
Attach the ground anchors. see details below.



STEP 7

Attach the goal net. The goal net has a braided edge, this is the edge to fit to the net fixings. Always attach the corners of the net first. See notes.

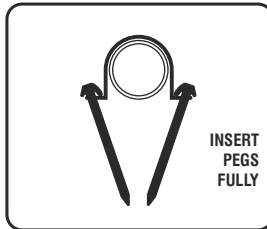
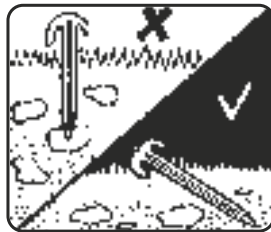
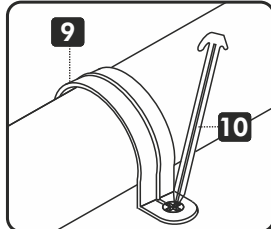
TIE A CORD BETWEEN THE TOP SUPPORT TUBES TO SUPPORT THE ROOF OF THE NET (THIS CAN BE LEFT TIED IN POSITION WHEN DISMANTLED).



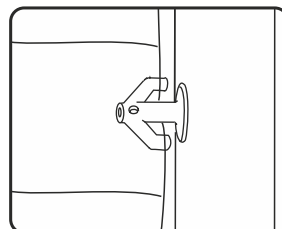
ANCHORING YOUR GOAL ON GRASS - POSITION YOUR GOAL ON A LEVEL PLAYING SURFACE. PLACE THE MULTI-SURFACE ANCHOR OVER EACH SIDE OF THE GROUND FRAME (POSITIONS SHOWN) HAMMER THE PEGS THROUGH THE HOLES IN THE ANCHOR DOWN UNDER THE FRAME INTO THE GRASS. ADDITIONAL ANCHORS OR LARGER PEGS CAN BE PURCHASED FOR USE ON SOFT GROUND OR SAND. THESE ANCHORS CAN BE USED FOR HARD SURFACES SUCH AS TARMAC WITH OPTIONAL BOLTS. ON HOT/SUNNY DAYS TARMACADAM SOFTENS AND THEREFORE TO ANCHOR YOUR GOAL PROPERLY YOU MUST:-
1 DIG HOLES IN YOUR TARMAC FILL HOLES WITH CONCRETE
2 DRILL TWO 14MM HOLES 12CM APART AND 70MM DEPTH.
3 POSITION GOAL AND ANCHOR, INSERT AND TIGHTEN BOLT.

FOR OTHER SURFACES SUCH AS WOODEN SPORTS HALL FLOORS WOOD SCREWS (INSTEAD OF BOLTS) OR COUNTER BALANCE WEIGHTS CAN ALSO BE USED (SUPPLIED SEPARATELY).

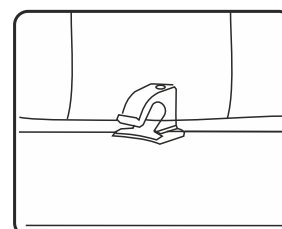
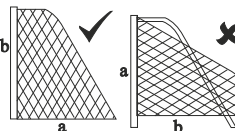
WARNING: Check the position of any underground services before using the ground anchors and pegs. We take no responsibility for any damage or injury caused in this manner. Our ground anchor system is designed to give slightly under heavy impact to help prevent serious injury. To loosen tap sides of the nylon ground anchor with a hammer before extracting.



LONGER GROUND PEGS ARE AVAILABLE SEPARATELY.
STANDARD 200mm
SOFTER GROUND 300mm
Longer pegs are to be used on sandy or Soft ground earth. A risk assessment of soil conditions suitability should be carried out when anchors are to be used.

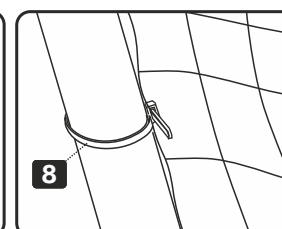


FIT NETS TO ARROWHEAD FIXINGS

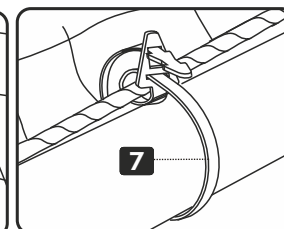


FIT NETS TO GROUND FRAME FIXINGS

SQUARE MESH Net is cut to shape. Simply throw over the frame and fit each end onto top stanchion by securing on each corner of crossbar. NOTE: If your net does not fit the first time, you may be fitting it to the goal frame upside down i.e. that is to say the net from the crossbar to the floor (a) is longer than the length of the net to the bottom of the upright. (b)

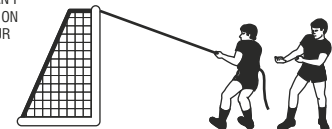


OPTIONAL - STANCHION TIES

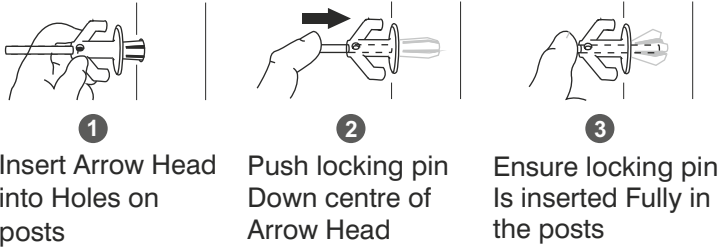


OPTIONAL - NE TIES

TEST YOUR GOAL ANCHORS. SATISFY YOURSELF THAT THE GOAL IS SAFE TO USE. TIE A 5 METRE LENGTH OF ROPE TO THE CENTRE OF YOUR CROSSBAR. WITH SOMEONE STOOD BEHIND YOU (TO SUPPORT YOUR WEIGHT SHOULD YOU FALL) LEAN BACK (ENSURING THE GOAL CAN'T CAUSE INJURY TO ANYONE) PULLING ON THE ROPE UNTIL SATISFIED THAT YOUR GOAL CAN TAKE THE WEIGHT OF AN ADULT



DO NOT THROW THE PINS AWAY



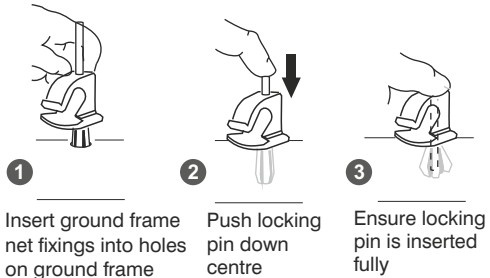
1
Insert Arrow Head into Holes on posts

2
Push locking pin Down centre of Arrow Head

3
Ensure locking pin is inserted Fully in the posts

GROUND FRAME NET FIXING

DO NOT THROW THE LOCKING PINS AWAY

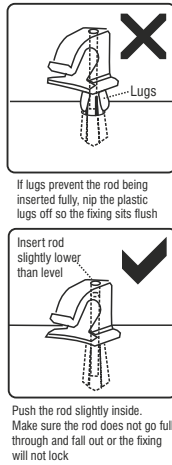


1
Insert ground frame net fixings into holes on ground frame

2
Push locking pin down centre

3
Ensure locking pin is inserted fully

On back frame fix all the same way with opening facing inwards. On side frames along the ground fit alternate



If lugs prevent the rod being inserted fully, nip the plastic lugs off so the fixing sits flush

Insert rod slightly lower than level

Push the rod slightly inside. Make sure the rod does not go fully through and fall out or the fixing will not lock

At the end of the season nets can be tied into a bundle and placed into a pillow case (not to damage washing machine) and washed at 40°C with normal washing powder. The ground frame can be washed with hot soapy water. Any scuff marks on posts can be rubbed off with a light abrasive scouring pad.

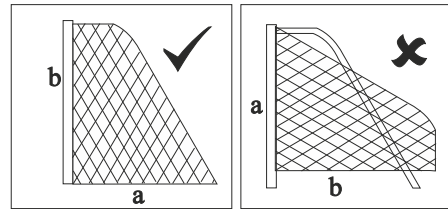
WARNING: Check the position of any underground services before using the ground anchors and pegs. We take no responsibility for any damage or injury caused in this manner.

NEVER use the goals without the ground anchor system. In severe weather or windy conditions it is advisable to take your goal down as damage is not covered by the guarantee in such circumstances. If you find the nets are worn along the floor it may be rodents, by spreading pepper along the base frame rodents will be deterred.

It is advisable in any contact sport to take out the relevant insurance's to cover against injury both from taking part, equipment and other unforeseeable circumstances.

Crossbars will not be replaced within the guarantee period if broken by swinging or climbing or any other misuse.

DO NOT try to glue any damaged fixings. Plastic materials in this product vary and this may cause the plastic to break. Always replace any damaged components.



SQUARE MESH Net is cut to shape. Simply throw over the frame and fit each end onto top stanchion by securing on each corner of crossbar.

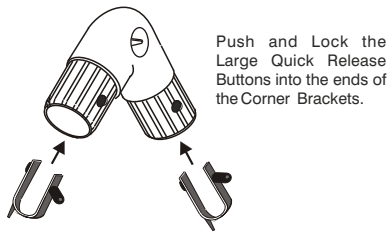
NOTE: If your net does not fit the first time, you may be fitting it to the goal frame upside down i.e. that is to say the net from the crossbar to the floor (a) is longer than the length of the net to the bottom of the upright (b)

We advise adult supervision during assembly and use. Observe and follow warning labels attached to goal. Do not use any components, nets or parts if they are damaged or broken. Spare parts and replacement nets are readily available. If others are to install your goal you should show them how to erect and dismantle the goal and hand them a copy of the fitting instruction. If you lose your instructions copies can be attained from our company website. To avoid damage when dismantling the goal follow these guidelines: it is advisable in extreme windy conditions to dismantle the goal and store away. Do not drop any heavy objects on ends of tubes. When dismantling the goal ensure that all fittings are packed away and that none are left on the playing surface. Warning goals must never be left up or used unless they are properly fitted with ground anchors with net attached and securely pegged down.

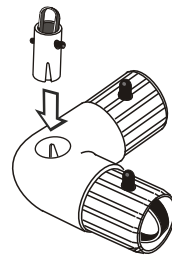
Hard surfaces: to prevent damage to goal or its components, loosen soil with a steel pole and moisten with some water before inserting the ground anchors. Do not use the goal in sub zero temperatures. warning labels should be replaced when worn and we recommend replacing them every two years - spare labels available. damaged components requested under guarantee must be returned for inspection. Failure to follow the warnings, fitting instructions contained in this document, may invalidate your guarantee. The company, its agents and representatives do not accept any product liability if used outside the EU. Use of the product in other countries outside the EU including the USA is not covered and appropriate insurance should be taken out by the user to cover for any eventuality. We reserve the rights to amend the specifications of our soccer products in the interest of continued development. Your product therefore may differ slightly to those illustrated. Not suitable for children under 36 months until assembled due to small parts.

NOTE: All plastic extrusions vary and therefore some tubes may be looser or tighter to connector fittings. If you want to increase the diameter of the fitting just wrap masking tape around the part that fits into the tube, twist as you insert the fitting and it will grab to the tube tight...you can make tighter fits by adding more tape.

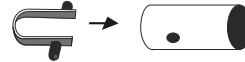
CORNER BRACKETS



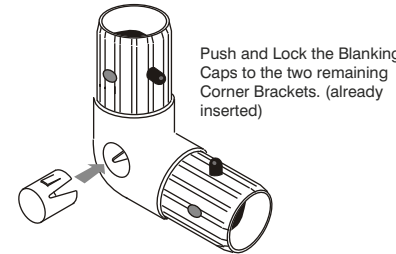
Push and Lock the Large Quick Release Buttons into the ends of the Corner Brackets.



Push and Lock the spigots to two of the four Corner Brackets.



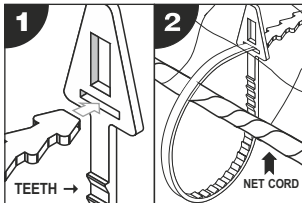
Push and Lock the Small Quick Release Buttons into the ends of the Spigots.



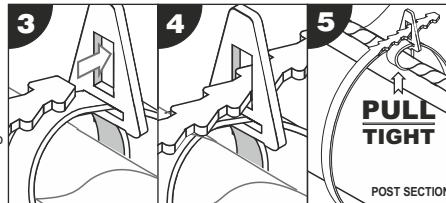
Push and Lock the Blanking Caps to the two remaining Corner Brackets. (already inserted)

NET TIES

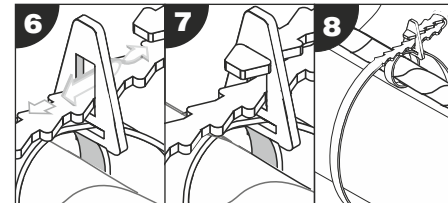
Ensure the teeth of the Net tie are facing you (see step 1). Loop the Net Tie around the Net Cord and slide the end into the horizontal slot and pull tight onto Net Cord (see step 1 - 2).



The vertical slot of the Net Tie is used to secure the net to the post. Loop the Net Tie around the post and insert through vertical slot and twist to lock. (steps 3 - 5).



Any excess Net Tie can looped back into the vertical slot. This will also secure the net tie in a fixed position (steps 6 - 8). If Net Ties are to be removed after use then do not loop back into vertical slot.



Guarantee

HOW TO REGISTER

To register for your guarantee please visit our web page

www.itsagoal.net

and scroll to the bottom of the page and click on the link 'Guarantee' and follow the instructions. Thank you.



SPARE PARTS

TEL: 0114 24 34 200