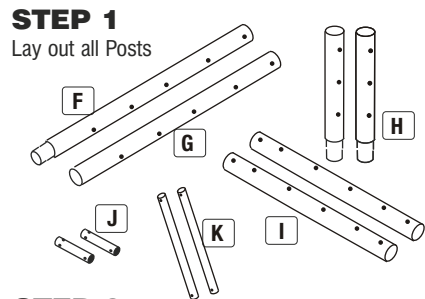


## COMPONENTS

<b>A</b>	NET TIE	x20	
<b>B</b>	SMALL QUICK RELEASE BUTTON	x4	
<b>C</b>	STRAIGHT CONNECTOR	x1	
<b>D</b>	STANCHION CONNECTOR	x2	
<b>NF</b>	GROUND FRAME NET FIXING with attached LOCKING PIN	x4	
<b>E</b>	ARROW HEAD NET FIXING with attached LOCKING PIN	x4	
<b>NET</b>	GOAL NET 12' x 6'	x1	
<b>POST SECTIONS</b>			
<b>F</b>	CROSSBAR EXTENSION 1205mm LONG - 68mm Diameter	x1	
<b>G</b>	BACKBAR EXTENSION 1205mm LONG - 68mm Diameter	x1	
<b>H</b>	UPRIGHT EXTENSIONS 521mm LONG - 68mm Diameter	x2	
<b>I</b>	SIDEBAR SECTION 1360mm LONG - 68mm Diameter	x2	
<b>J</b>	TOP STANCHION TUBE 400mm LONG - 40mm Diameter	x2	
<b>K</b>	BACK STANCHION TUBE EXTENSION 630mm LONG - 40mm Diameter	x2	

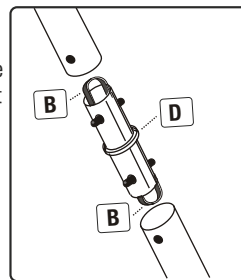
## 8' x 4' Extension to 12' x 6'



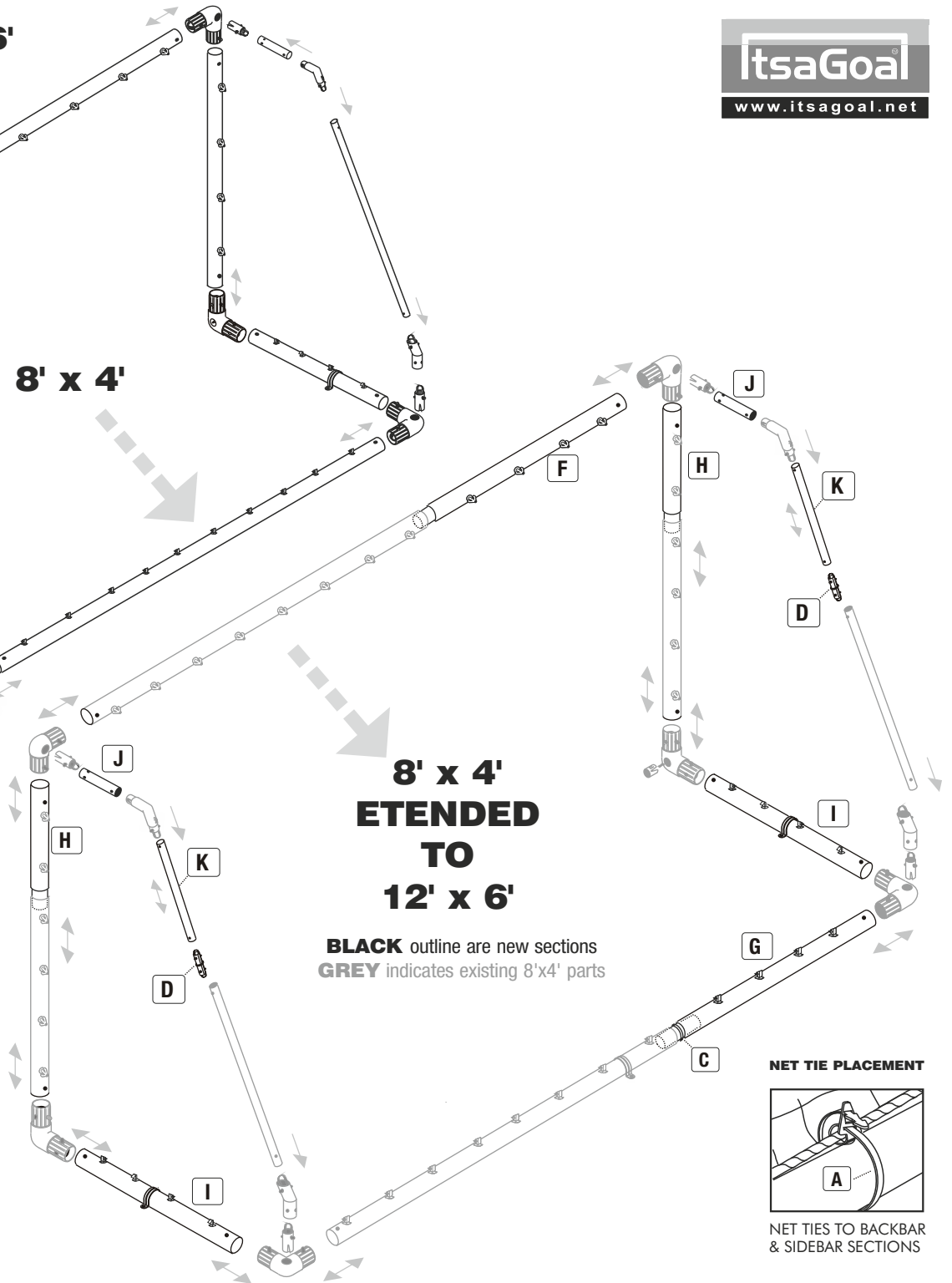
**STEP 2**  
Insert new post section **F** (1205mm) in the existing Crossbar & Insert new post section **G** (1205mm) into the existing Backbar, the Backbar connects using Straight Connector **C**

**STEP 3**  
Insert new post sections **H** (521mm) in the existing Uprights

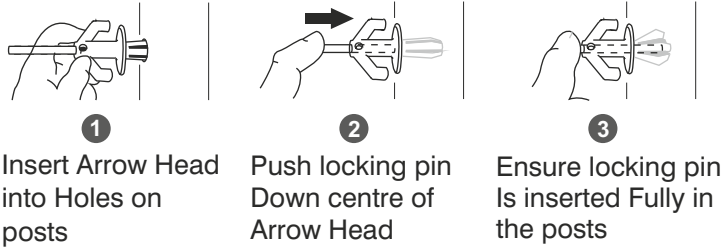
**STEP 4**  
Insert new post sections **K** to the existing back net support with connector **D**



**STEP 5**  
Now you have Uprights, Crossbars, Backbars and Back Net Supports extended, fit net fixings in the new sections and assemble your goals by locking posts into corner brackets and note you have new side bars **I** (1360mm) and new top stanchions **J** (400mm)



## DO NOT THROW THE PINS AWAY



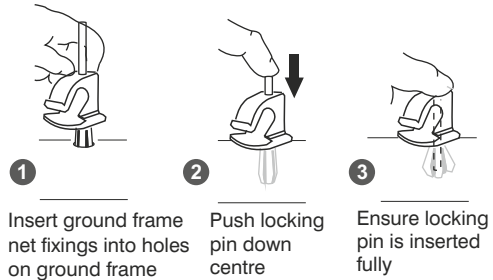
1  
Insert Arrow Head into Holes on posts

2  
Push locking pin Down centre of Arrow Head

3  
Ensure locking pin is inserted Fully in the posts

### GROUND FRAME NET FIXING

## DO NOT THROW THE LOCKING PINS AWAY

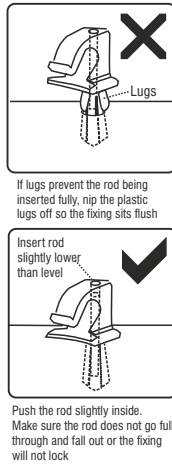


1  
Insert ground frame net fixings into holes on ground frame

2  
Push locking pin down centre

3  
Ensure locking pin is inserted fully

On back frame fix all the same way with opening facing inwards. On side frames along the ground fit alternate



At the end of the season nets can be tied into a bundle and placed into a pillow case (not to damage washing machine) and washed at 40 CO with normal washing powder. The ground frame can be washed with hot soapy water. Any scuff marks on posts can be rubbed off with a light abrasive scouring pad.

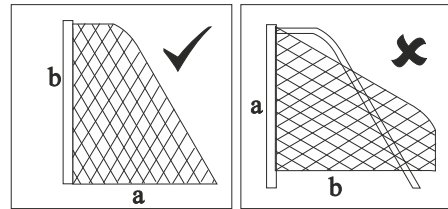
**WARNING:** Check the position of any underground services before using the ground anchors and pegs. We take no responsibility for any damage or injury caused in this manner.

**NEVER** use the goals without the ground anchor system. In severe weather or windy conditions it is advisable to take your goal down as damage is not covered by the guarantee in such circumstances. If you find the nets are worn along the floor it may be rodents, by spreading pepper along the base frame rodents will be deterred.

It is advisable in any contact sport to take out the relevant insurance's to cover against injury both from taking part, equipment and other unforeseeable circumstances.

Crossbars will not be replaced within the guarantee period if broken by swinging or climbing or any other misuse.

**DO NOT** try to glue any damaged fixings. Plastic materials in this product vary and this may cause the plastic to break. Always replace any damaged components.



**SQUARE MESH** Net is cut to shape. Simply throw over the frame and fit each end onto top stanchion by securing on each corner of crossbar.

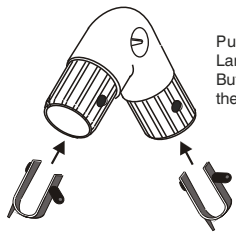
**NOTE:** If your net does not fit the first time, you may be fitting it to the goal frame upside down i.e. that is to say the net from the crossbar to the floor (a) is longer than the length of the net to the bottom of the upright.(b)

We advise adult supervision during assembly and use. Observe and follow warning labels attached to goal. Do not use any components, nets or parts if they are damaged or broken. Spare parts and replacement nets are readily available. If others are to install your goal you should show them how to erect and dismantle the goal and hand them a copy of the fitting instruction. If you lose your instructions copies can be attained from our company website. To avoid damage when dismantling the goal follow these guidelines: it is advisable in extreme windy conditions to dismantle the goal and store away. Do not drop any heavy objects on ends of tubes. When dismantling the goal ensure that all fittings are packed away and that non are left on the playing surface. Warning goals must never be left up or used unless they are properly fitted with ground anchors with net attached and securely pegged down.

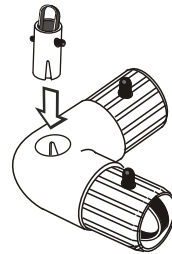
**Hard surfaces:** to prevent damage to goal or it's components, loosen soil with a steel pole and moisten with some water before inserting the ground anchors. Do not use the goal in sub zero temperatures. warning labels should be replaced when worn and we recommend replacing them every two years -spare labels available. damaged components requested under guarantee must be returned for inspection. Failure to follow the warnings, fitting instructions contained in this document, may invalidate your guarantee. The company, its agents and representatives do not accept any product liability if used outside the EU. Use of the product in other countries outside the EU including the USA is not covered and appropriate insurance should be taken out by the user to cover for any eventuality. We reserve the rights to amend the specifications of our soccer products in the interest of continued development. Your product therefore may differ slightly to those illustrated. Not suitable for children under 36 months until assembled due to small parts.

**NOTE :** All plastic extrusions vary and therefore some tubes may be looser or tighter to connector fittings. If you want to increase the diameter of the fitting just wrap masking tape around the part that fits into the tube, twist as you insert the fitting and it will grab to the tube tight ...you can make tighter fits by adding more tape.

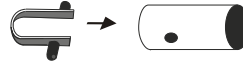
## CORNER BRACKETS



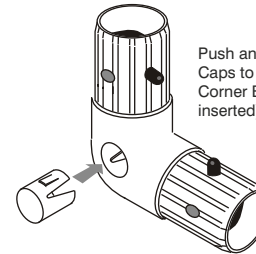
Push and Lock the Large Quick Release Buttons into the ends of the Corner Brackets.



Push and Lock the spigots to two of the four Corner Brackets.



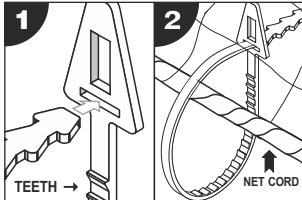
Push and Lock the Small Quick Release Buttons into the ends of the Spigots.



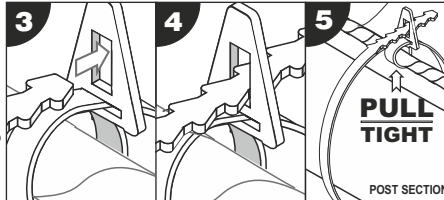
Push and Lock the Blanking Caps to the two remaining Corner Brackets. (already inserted)

## NET TIES

Ensure the teeth of the Net tie are facing you (see step 1). Loop the Net Tie around the Net Cord and slide the end into the horizontal slot and pull tight onto Net Cord (see step 1 - 2).



The vertical slot of the Net Tie is used to secure the net to the post. Loop the Net Tie around the post and insert through vertical slot and twist to lock. (steps 3 - 5).



Any excess Net Tie can looped back into the vertical slot. This will also secure the net tie in a fixed position (steps 6 - 8). If Net Ties are to be removed after use then do not loop back into vertical slot.

