

COMPONENTS

AT	'T' BRACKET with nylon bush pre inserted for top post connection	x2	
A	CORNER BRACKET	x2	
X	CORNER BRACKET UPRIGHT 4 HOLES	x4	
C	SPIGOT	x4	
D	BLANKING CAP	x2	
E	MULTI-SURFACE ANCHOR	x4	
F	GROUND PEG	x8	
G	STANCHION ELBOW	x2	
H	LOWER BACK STANCHION	x2	
I	LARGE QUICK RELEASE BUTTON	x12	
J	SMALL QUICK RELEASE BUTTON	x8	
K	M10 SOCKET DOME SCREW AND HEX DOME NUT - 80mm LONG	x2	
L	NET TIE	x28	
M	STRAIGHT CONNECTOR	x1	
N	ARROW HEAD NET FIXING with attached LOCKING PIN	x31	
NET	GOAL NET 16' x 7'	x1	
AK	HEX KEY FOR COMPONENT K	x1	
NH	GROUND FRAME NET FIXING HOOK	x28	

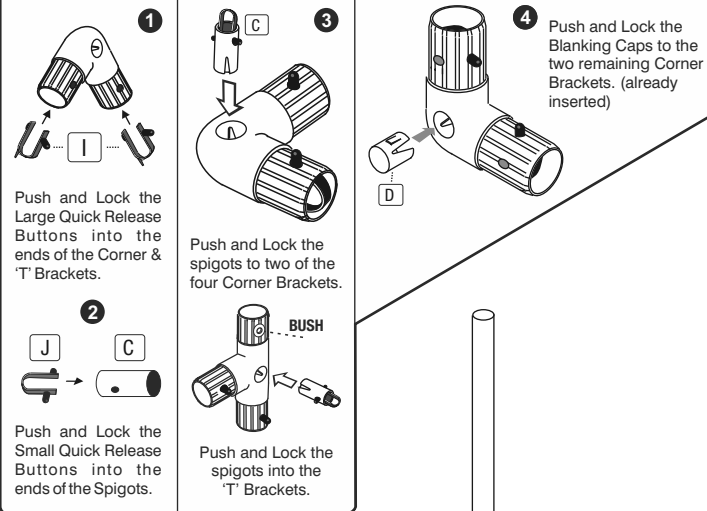
POST SECTIONS

O	TOP POST SECTION 2422mm LONG - 68mm Diameter	x2	
PI	CROSSBAR SECTION with insert 2422mm LONG - 68mm Diameter	x1	
P	CROSSBAR SECTION 2422mm LONG - 68mm Diameter	x1	
Q	BACKBAR SECTION 2422mm LONG - 68mm Diameter	x2	
R	SIDEBAR SECTION 1726mm LONG - 68mm Diameter	x2	
S	UPRIGHT SECTION 2031mm LONG - 68mm Diameter	x2	
T	TOP STANCHION TUBE 630mm LONG - 40mm Diameter	x2	
U	BACK STANCHION TUBE 2232mm LONG - 40mm Diameter	x2	

16' X 7' GAELIC GOAL (Multi-Surface) - Two section crossbar.

CORNER BRACKETS

! BEFORE YOU START TO ASSEMBLE YOUR GOAL PREPARE THESE FIRST.



CARE & MAINTENANCE

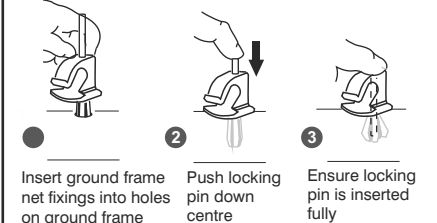
see separate sheet supplied or visit www.itsagoal.net for additional copies. Our goalpost if used correctly will last many years. We do also offer a full spare part service and if your goals need refurbishment this can be arranged

Note - a small nylon BUSH is inserted into the T corner bracket here this is to create a tight fit where the top posts connect with the nut and bolt

DO NOT THROW THE LOCKING PINS AWAY



DO NOT THROW THE LOCKING PINS AWAY



On back frame fix all the same way with opening facing inwards. On side frames along the ground fit alternate

MINI-SOCCER CORNER KIT

AVAILABLE SEPARATELY



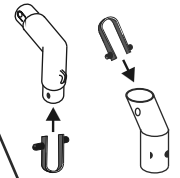
To make a complete mini-soccer goal.

TO PURCHASE VISIT www.soccertackle.com

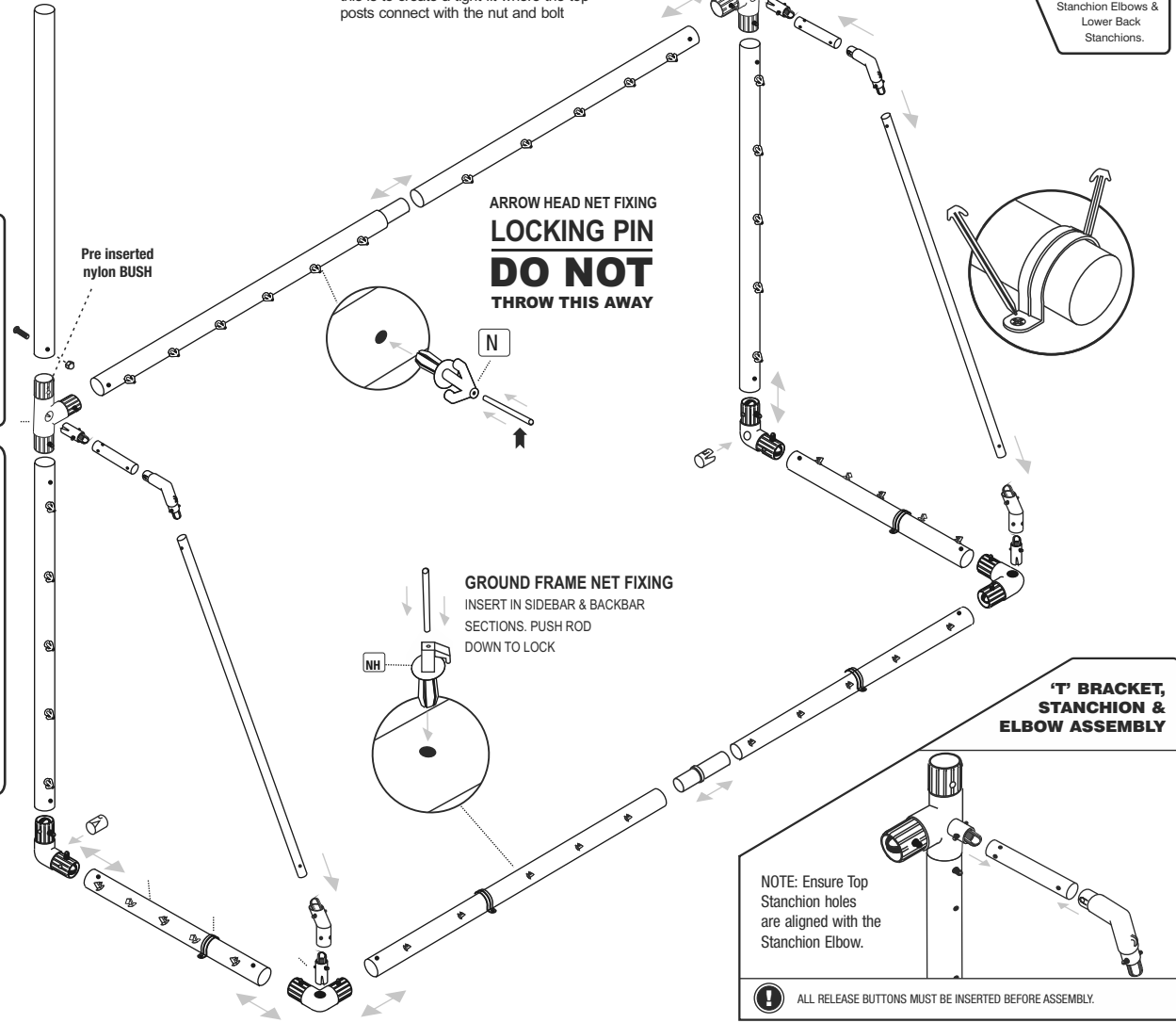
FITTING INSTRUCTION



STANCHION ELBOWS & LOWER BACK STANCHIONS



Push and Lock the remaining Small Quick Release buttons to both the Stanchion Elbows & Lower Back Stanchions.



! ALL RELEASE BUTTONS MUST BE INSERTED BEFORE ASSEMBLY.

TEL: 0114 24 34 200
SPARE PARTS

WE RESERVE THE RIGHTS TO AMEND THE SPECIFICATIONS OF OUR SOCCER PRODUCTS IN THE INTEREST OF CONTINUED DEVELOPMENT. YOUR PRODUCT THEREFORE MAY DIFFER LIGHTLY TO THOSE ILLUSTRATED. E&OE