








COMPONENTS

A	'T' BRACKET with pre inserted nylon bush for top post connection	x2	
B	CORNER BRACKET	x2	
X	CORNER BRACKET UPRIGHT 4 HOLES	x2	
C	SPIGOT	x4	
D	BLANKING CAP	x2	
E	MULTI-SURFACE ANCHOR	x4	
F	GROUND PEG	x8	
G	STANCHION ELBOW	x2	
H	LOWER BACK STANCHION	x2	
I	LARGE QUICK RELEASE BUTTON	x12	
J	SMALL QUICK RELEASE BUTTON	x8	
K	M10 SOCKET DOME SCREW AND HEX DOME NUT - 80mm LONG	x2	
L	NET TIE	x12	
M	ARROW HEAD NET FIXING with attached LOCKING PIN	x24	
NH	GROUND FRAME NET FIXING HOOK	x24	
NET	GOAL NET 12' x 6'	x1	
AK	HEX KEY FOR COMPONENT K	x1	

LABELS Note spare labels are available from www.itsagoal.net

ITSAGOAL LOGO LABEL	x1
WARNING LABEL RED/WHITE	x1
SOCCERTACKLE.COM LABEL	x2

POST SECTIONS

N	TOP POST SECTION 2422mm LONG - 68mm Diameter	x2	
O	CROSSBAR SECTION 3628mm LONG - 68mm Diameter	x1	
P	BACKBAR SECTION 3628mm LONG - 68mm Diameter	x1	
Q	SIDEBAR SECTION 1360mm LONG - 68mm Diameter	x2	
R	UPRIGHT SECTION 1726mm LONG - 68mm Diameter	x2	
S	TOP STANCHION TUBE 400mm LONG - 40mm Diameter	x2	
T	BACK STANCHION TUBE 1896mm LONG - 40mm Diameter	x2	

12' X 6' GAELIC GOAL

(12' x 6' Multi-Surface) - One section crossbar.

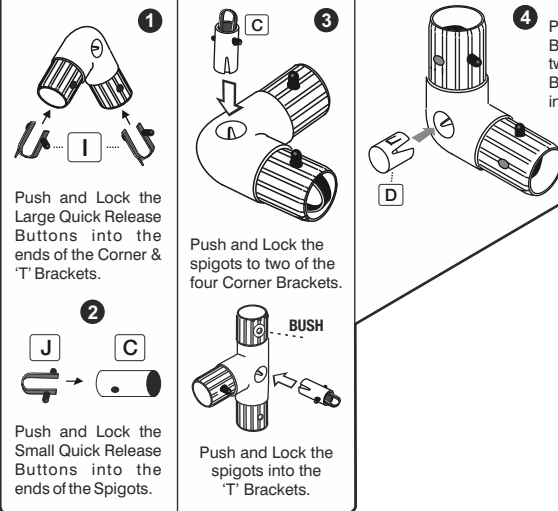
FITTING INSTRUCTION



TEL: 0114 24 34 200
SPARE PARTS

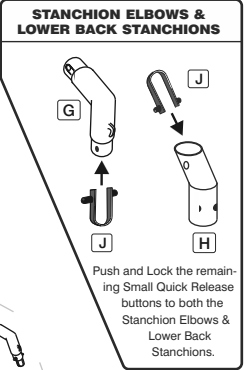
CORNER BRACKETS

! BEFORE YOU START TO ASSEMBLE YOUR GOAL PREPARE THESE FIRST.

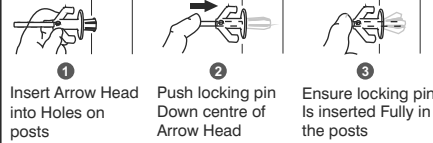


CARE & MAINTENANCE - see separate sheet supplied or visit www.itsagoal.net for additional copies. Our goalpost if used correctly will last many years. We do also offer a full spare part service and if your goals need refurbishment this can be arranged

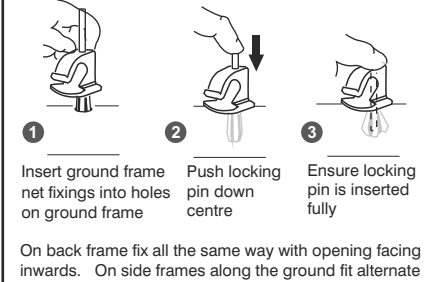
Note - a small nylon BUSH is inserted into the T corner bracket here this is to create a tight fit where the top posts connect with the nut and bolt



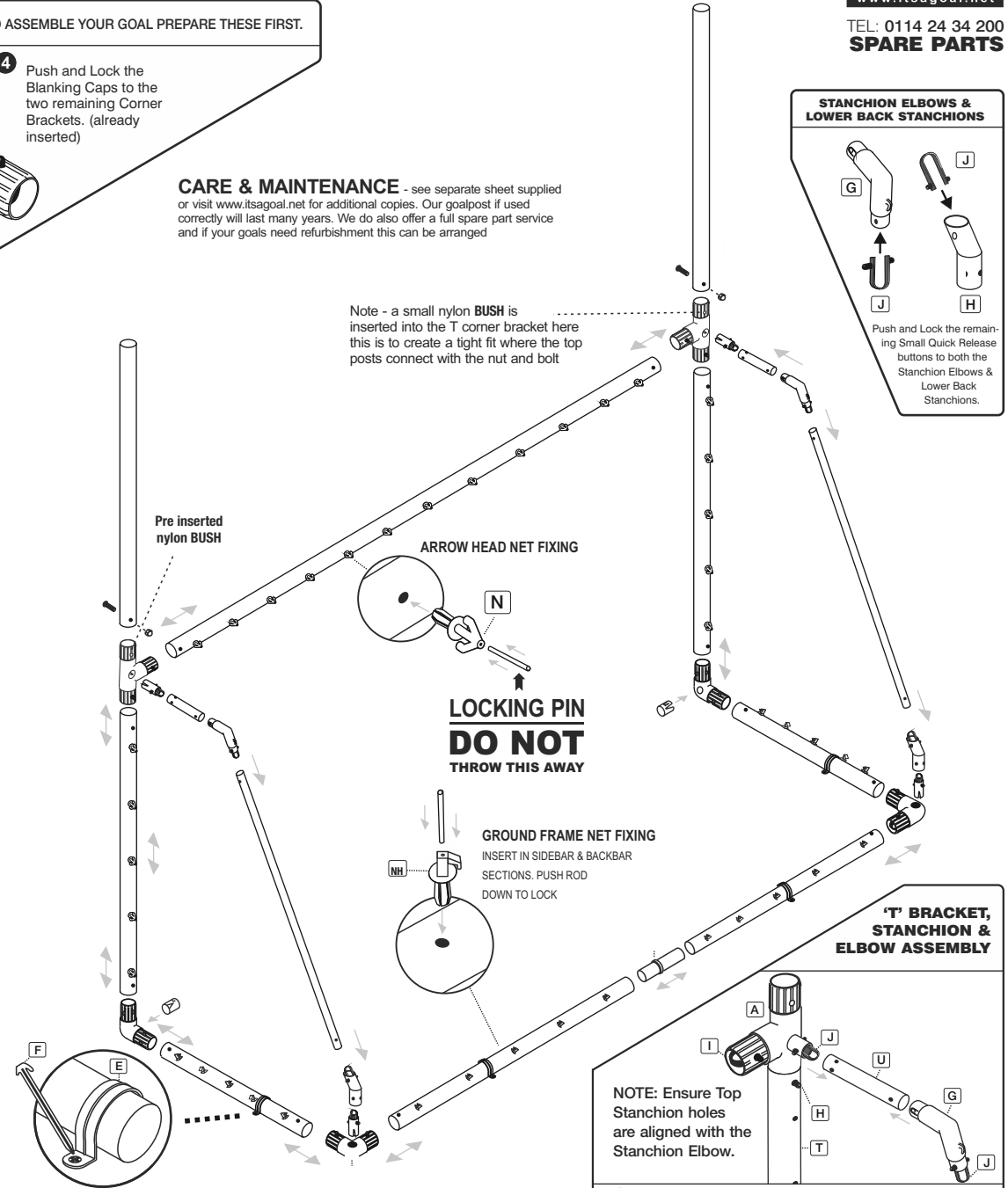
DO NOT THROW THE LOCKING PINS AWAY



GROUND FRAME NET FIXING DO NOT THROW THE LOCKING PINS AWAY



MINI-SOCCER CORNER KIT AVAILABLE SEPARATELY



! ALL RELEASE BUTTONS MUST BE INSERTED BEFORE ASSEMBLY.