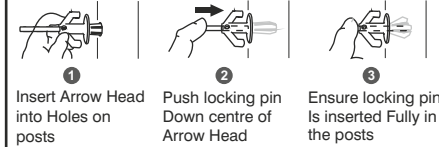


COMPONENTS

A	CORNER BRACKET	x2	
B	SPIGOT	x2	
C	FRONT GROUND ANCHOR	x2	
D	REAR GROUND ANCHOR	x2	
E	GROUND PEG	x26	
F	PLASTIC STANCHION ELBOW	x2	
G	LARGE QUICK RELEASE BUTTON	x6	
H	SMALL QUICK RELEASE BUTTON	x4	
I	ARROW HEAD NET FIXING with attached LOCKING PIN	x24	
NET	GOAL NET 12' x 6'	x1	

DO NOT THROW THE LOCKING PINS AWAY



POST SECTIONS

J	LEFT CROSSBAR SECTION 68mm Diameter	x1	
K	RIGHT CROSSBAR SECTION 68mm Diameter	x1	
L	UPRIGHT SECTION 68mm Diameter	x2	
M	TOP STANCHION TUBE 40mm Diameter	x2	
N	BACK STANCHION TUBE 40mm Diameter	x2	

68mm — 12 x 6 — UPVC ITSA GOAL ANCHORED 2 PC — FI.cdr

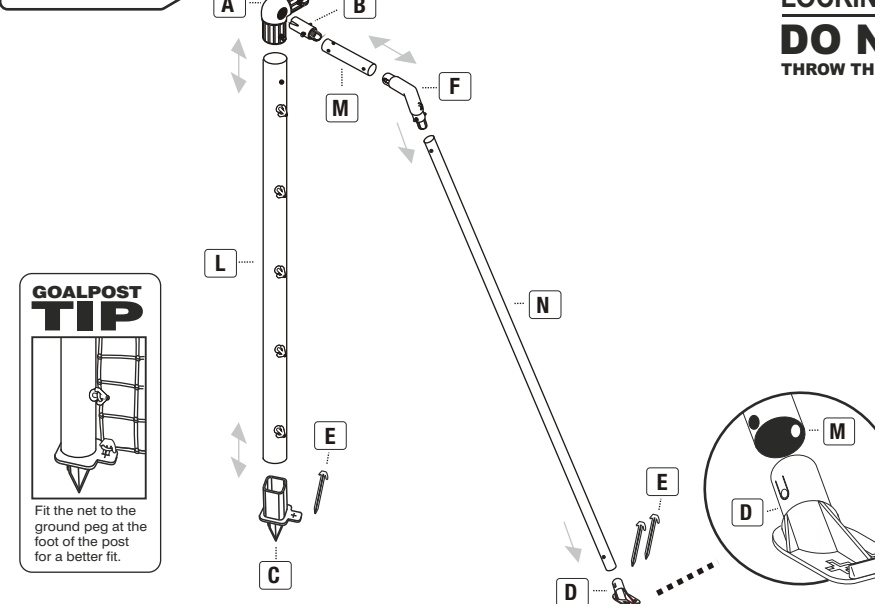
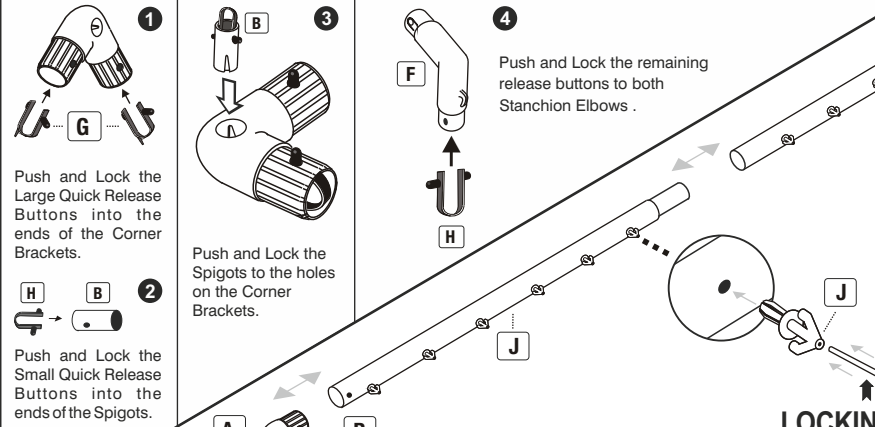
12' X 6' UPVC GOAL POST (ANCHORED)

(12' x 6') - Two section crossbar. FITTING INSTRUCTION



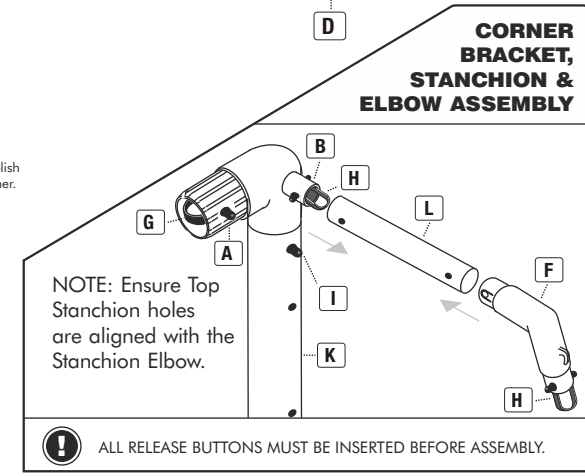
CORNER BRACKETS

! BEFORE YOU START TO ASSEMBLE YOUR GOAL PREPARE THESE FIRST.

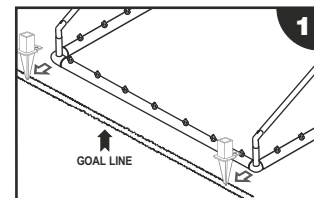


GOALPOST TIP
Fit the net to the ground peg at the foot of the post for a better fit.

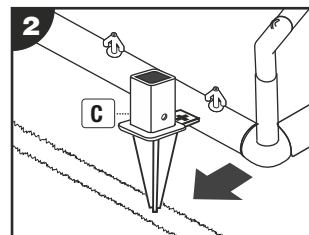
IDEAL FOR FIRST TIME ASSEMBLY
NOTE: You can use a furniture polish to make them easier to slot together. Do not grease or use Vaseline



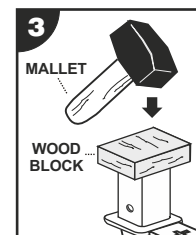
FRONT GROUND ANCHOR POSITIONS



1 Lay the Crossbar Section along the goal line to give you the correct position to insert the Front Ground Anchors and the distance between them (steps 1-2).



2 The Front Ground Anchors need to be sunk into the ground. For hard grass surfaces You may need to hammer the Front Ground Anchor. Use a wood block to protect the Anchor (step 3).



3 When the Ground Anchor is in position you can now slide the Uprights onto the anchors (step 4). To secure the Anchor in the ground use a Ground peg which will keep the Anchor in place (step 5).

